

Agilent Technologies U3042AE04

User's Guide

**Use this manual with the following documents:
PNA Series Network Analyzer On-line Help System**



Agilent Technologies

Manufacturing Part Number: U3042-90008

Printed in USA: August 2010

Supersede: May 26, 2010

© Copyright 2010 Agilent Technologies, Inc. All rights reserved.

Warranty Statement

THE MATERIAL CONTAINED IN THIS DOCUMENT IS PROVIDED “AS IS,” AND IS SUBJECT TO BEING CHANGED, WITHOUT NOTICE, IN FUTURE EDITIONS. FURTHER, TO THE MAXIMUM EXTENT PERMITTED BY APPLICABLE LAW, AGILENT DISCLAIMS ALL WARRANTIES, EITHER EXPRESS OR IMPLIED WITH REGARD TO THIS MANUAL AND ANY INFORMATION CONTAINED HEREIN, INCLUDING BUT NOT LIMITED TO THE IMPLIED WARRANTIES OF MERCHANTABILITY AND FITNESS FOR A PARTICULAR PURPOSE. AGILENT SHALL NOT BE LIABLE FOR ERRORS OR FOR INCIDENTAL OR CONSEQUENTIAL DAMAGES IN CONNECTION WITH THE FURNISHING, USE, OR PERFORMANCE OF THIS DOCUMENT OR ANY INFORMATION CONTAINED HEREIN. SHOULD AGILENT AND THE USER HAVE A SEPARATE WRITTEN AGREEMENT WITH WARRANTY TERMS COVERING THE MATERIAL IN THIS DOCUMENT THAT CONFLICT WITH THESE TERMS, THE WARRANTY TERMS IN THE SEPARATE AGREEMENT WILL CONTROL.

DFARS/Restricted Rights Notice

If software is for use in the performance of a U.S. Government prime contract or subcontract, Software is delivered and licensed as “Commercial computer software” as defined in DFAR 252.227-7014 (June 1995), or as a “commercial item” as defined in FAR 2.101(a) or as “Restricted computer software” as defined in FAR 52.227-19 (June 1987) or any equivalent agency regulation or contract clause. Use, duplication or disclosure of Software is subject to Agilent Technologies’ standard commercial license terms, and non-DOD Departments and Agencies of the U.S. Government will receive no greater than Restricted Rights as defined in FAR 52.227-19(c)(1-2) (June 1987). U.S. Government users will receive no greater than Limited Rights as defined in FAR 52.227-14 (June 1987) or DFAR 252.227-7015 (b)(2) (November 1995), as applicable in any technical data.

Safety Notes

The following safety notes are used throughout this document. Familiarize yourself with each of these notes and its meaning before performing any of the procedures in this document.

WARNING **Warning denotes a hazard. It calls attention to a procedure which, if not correctly performed or adhered to, could result in injury or loss of life. Do not proceed beyond a warning note until the indicated conditions are fully understood and met.**

CAUTION Caution denotes a hazard. It calls attention to a procedure that, if not correctly performed or adhered to, could result in damage to or destruction of the instrument. Do not proceed beyond a caution sign until the indicated conditions are fully understood and met.

Definitions

- *Specifications* describe the performance of parameters covered by the product warranty (temperature –0 to 55 °C, unless otherwise noted.)
- *Typical* describes additional product performance information that is not covered by the product warranty. It is performance beyond specification that 80% of the units exhibit with a 95% confidence level over the temperature range 20 to 30 °C. Typical performance does not include measurement uncertainty.
- *Nominal* values indicate expected performance or describe product performance that is useful in the application of the product, but is not covered by the product warranty.
- *Characteristic Performance* describes performance parameter that the product is expected to meet before it leaves the factory, but is not verified in the field and is not covered by the product warranty. A characteristic includes the same guard bands as a specification.

Contents

U3042AE04

Introduction	2
Description	3
Network Analyzer Requirements	3
Verifying the Shipment	3
Available Options	4
U3042AE04 Options	4
Accessory Options	4
Cable Options	4
General Specifications	5
Power Requirements	5
Environmental Requirements	6
Frequency Range and Maximum Power Levels	7
Typical Reflection Tracking	8
Front and Rear Panel Features	9
Test Ports – 3.5 mm Bulkhead (male)	9
Access Ports – 3.5 mm (female)	9
Ground	9
Test Port LEDs	9
Control Lines and Voltage Adjust	9
Power Switch	10
Active LED	10
Bias Tee Input (Option 002)	10
Pass Through Interface	10
Test Set Interface	10
Line Module	10
Available Fuses	11
System Setup with N5230C	12
Preparing the N5230C Network Analyzer	12
N5230C RF Interface Cable Connections	14
System Setup with N5242A	15
Preparing the N5242A Network Analyzer	15
N5242A RF Interface Cable Connections	18
Controlling the U3042AE04 with N5242A or N5230C	20
PNA Multiport Mode for Option 551	20
Sweep Setup for Multiport and Standalone PNA Modes	24
N-Port Calibration with N5242A or N5230C	25
N5242A or N5230C Interface Control	27
N5242A or N5230C GPIB Control	31
DUT Control Lines	34
Setting the DUT Control Interface	34
Setting the Variable Source Voltage	36
Connecting to the DUT Control Lines	36
Using an External Power Supply	37
U3042AE04 I/O Interface Commands	39
Switch Address and Data	39
Operational Check	42
Verification Limits	42
Equipment Required	43
Operational Check Procedure	44

Contents

Troubleshooting Operational Check Failures	53
Interconnect Cable Verification	53
Service Information	54
Replaceable Parts	55
Theory of Operation	56
RF Coupler/Bridges	56
RF Switch Components	56
PNA-L Switch Paths	57
PNA-X Switch Paths	58
System Block Diagrams	59
Safety and Regulatory Information	62
Introduction	62
Before Applying Power	62
Connector Care and Cleaning	62
Declaration of Conformity	62
Statement of Compliance	62
General Safety Considerations	63
Regulatory Information	65
Electrostatic Discharge Protection	67
Agilent Support, Services, and Assistance	68
Service and Support Options	68
Contacting Agilent	68
Shipping Your Analyzer to Agilent for Service or Repair	68

U3042AE04

Introduction

This document describes how to use the U3042AE04 Multiport Extension Test Set with the Agilent N5230C 4-Port PNA-L and the N5242A 4-Port PNA-X Network Analyzer for an 8-Port network analyzer solution.

Figure 1 N5230C 4-Port PNA-L with U3042AE04

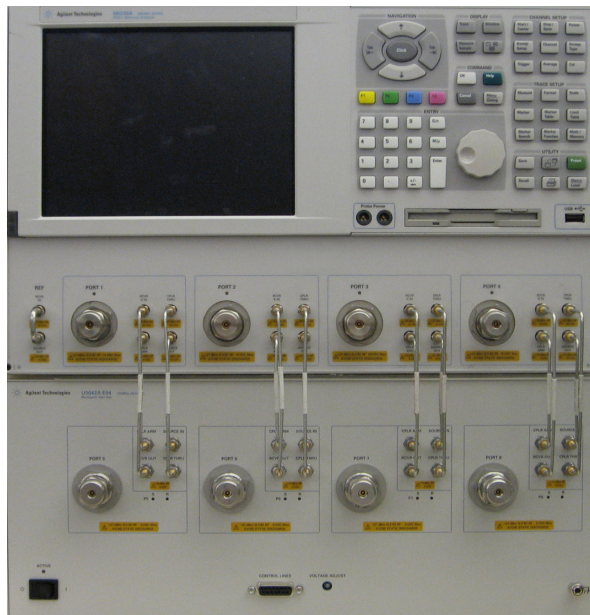
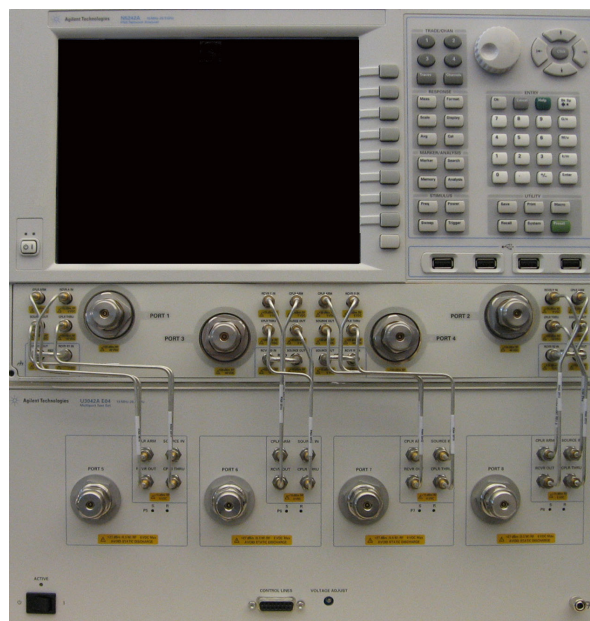


Figure 2 N5242A 4-Port PNA-X with U3042AE04



Description

The Agilent U3042AE04 Multiport Test Set is a 4-Port solid-state extension Test Set. When combined with a 4-Port N5230C PNA-L or N5242A PNA-X Network Analyzer, the U3042AE04 provides a complete solution for 8-Port full crossbar measurements.

The Test Set is directly controlled by the network analyzer. No external personal computer or software is required.

The N5230C PNA-L and N5242A PNA-X Network Analyzers will be referred to throughout this document as the PNA-L and the PNA-X. PNA refers to either PNA-L or PNA-X. The U3042AE04 will be referred to as the Test Set.

Network Analyzer Requirements

- The network analyzer requires Option 551 (N-Port error correction and measurement capability).
- The N5230C requires Option 245, 145, 246 or 146 to provide the Test Set interface connections, and requires Test Set file u3042ae04_p4.tsx
- The N5242A requires Option 400 to provide the Test Set interface connections and requires Test Set file u3042ae04_pnax_p4.tsx
- PNA Multiport Mode firmware revision:
N5242A Option 551 \geq A.08.04.07
N5230C Option 551 \geq A.08.04.10

The following Test Set file must be installed into the network analyzer file directory:
c:\Program Files\Agilent\Network Analyzer\testsets

4-Port PNA-L requires Test Set: u3042ae04_p4.tsx

4-Port PNA-X requires Test Set: u3042ae04_pna_p4.tsx

More PNA information is available on the following websites:

- Documentation - <http://www.agilent.com/find/pna>
- Network Analyzer Firmware - <http://na.tm.agilent.com/pna/firmware/firmware.htm>
- U3042AE04 Test Set Files - <http://na.tm.agilent.com/multiport> (see Test Set files)

Verifying the Shipment

To verify the contents shipped with your product, refer to the “Box Content List” included with the shipment.

Inspect the shipping container. If the container or packing material is damaged, it should be kept until the contents of the shipment have been checked mechanically and electrically. If there is physical damage refer to [“Contacting Agilent” on page 68](#). Keep the damaged shipping materials (if any) for inspection by the carrier and an Agilent Technologies representative.

Available Options

U3042AE04 Options

The Test Set has three available options:

Refer to “[System Block Diagrams](#)” beginning on [page 59](#).

- Standard - Solid state switches for fast switch speed and improved switch life. No Option 001 or 002 on the serial tag.
- Option 001 - Solid state switches with amplifiers to improve dynamic range.
- Option 002 - Solid state switches with amplifiers and bias-tees for each port.

NOTE The Options 700, 001, and 002 limit the frequency range due to blocking capacitors in the switches and amplifier performance. Solid state switches degrade frequencies below 2 MHz, and 001 or 002 amplifiers degrade performance above 18 GHz.

Accessory Options

Installation instructions are included in the option package.

- Option 1CM - Rackmount Kit (5063-9215)
- Option 1CN - Front Handle Kit (5063-9228)
- Option 1CP - Rackmount with Front Handle Kit (5063-9222)

Cable Options

The Test Set available cable options:

- Option 030 provides the interface cable set and hardware to connect the Test Set to the PNA-L.
- Option 042 provides the interface cable set and hardware to connect the Test Set to the PNA-X.

General Specifications

Specifications for the Test Set are characteristic for the system performance of the PNA and Test Set. Actual performance of the system is based on the customer's PNA and options that are used with the Test Set. A functional certificate is only offered for the Test Set.

NOTE When connected to a PNA, this Test Set will degrade the performance at the test ports. The internal switch paths reduce test port power and power to the receivers. This affects the test port power of the PNA and also reduces dynamic range. The reflection tracking values measured in the [“Operational Check” on page 42](#) can be subtracted from the analyzers dynamic range to determine the approximate performance of the system.

Power Requirements

Verify that the required ac power is available before installing the Test Set to the PNA.

- 100/120/220/240 VAC (50/60Hz)
- The instruments can operate with mains supply voltage fluctuations up to $\pm 10\%$ of the nominal voltage.
- Air conditioning equipment (or other motor-operated equipment) should not be placed on the same ac line that powers the Test Set and PNA.
- [Table 1](#) contains the maximum wattage for all instruments. This table can be use to determine the electrical and cooling requirements.

Table 1 Power Requirements

Standard Equipment	
Instrument	Maximum Wattage
N5242A	450
N5230C	350
U3042AE04	350

WARNING This is a Safety Class I product (provided with a protective earthing ground incorporated in the power cord). The mains plug shall be inserted only into a socket outlet provided with a protective earth contact. Any interruption of the protective conductor, inside or outside the instrument, is likely to make the instrument dangerous. Intentional interruption is prohibited.

Environmental Requirements

Refer to the PNA-L or PNA-X standard documentation for environmental requirements.

Environmental Tests

The Test Set complies with all applicable safety and regulatory requirements for the intended location of use.

- Pressure Altitude (Operation)
3,000 meters (~10,000 feet)
- The instrument can safely operate in a relative humidity of 80% for temperatures to 31 degrees C, decreasing linearly to 50% relative humidity at 40 degrees C.

Equipment Heating and Cooling

If necessary, install air conditioning and heating to maintain the ambient temperature within the appropriate range. Air conditioning capacity must be consistent with the BTU ratings given in [Table 1](#).

CAUTION Ventilation Requirements: When installing the instrument in a cabinet, the convection into and out of the instrument must not be restricted. The ambient temperature (outside the cabinet) must be less than the maximum operating temperature of the instrument by 4 °C for every 100 watts dissipated in the cabinet. If the total power dissipated in the cabinet is greater than 800 watts, forced convection must be used.

Required Conditions for Accuracy Enhanced Measurement

Accuracy-enhanced (error-corrected) measurements require the ambient temperature of the PNA and Test Set to be maintained within ± 1 °C of the ambient temperature at calibration.

Dimensions and Space Requirements

Standard installation of the Test Set and PNA includes configuration and installation on a customer provided lab bench or table top of adequate size and strength. For weight, dimensions and space requirements, refer to the network analyzer documentation that is used to configure the Test Set.

Table 2 Instrument Dimensions

Model	Weight	Height	Width	Depth
U3042AE04	11.4 kg (25 lb)	19.1 cm (7.5 in)	42.5 cm (16.7 in)	43.2 cm (17 in)

Frequency Range and Maximum Power Levels

Table 3 Usable Frequency Range

Model	Standard	001 or 002
N5230C	10 MHz to 20 GHz	10 MHz to 20 GHz
N5242A	10 MHz to 26.5 GHz	10 MHz to 26.5 GHz (degraded performance above 20 GHz)

CAUTION It is recommended that you do not operate components near damage levels (+27 dBm). The power levels must be 3 dB below maximum level to ensure no damage, see [Table 4](#).

Table 4 Power Levels

Maximum U3042AE04 Test Port RF Power Levels:	
PORT 5-8	+27 dBm 0 Vdc
Maximum U3042AE04 Access Ports:	
SOURCE OUT	+20 dBm 0 Vdc
CPLR ARM	+20 dbm 0 Vdc
CPLR THRU	+20 dBm 0 Vdc
RCVR OUT	+20 dBm 0 Vdc

NOTE Refer to your PNA specifications to determine the maximum input power levels for the PNA access and test ports, or to optimize the power levels in the receivers.

NOTE Damage and maximum levels are not necessarily the optimum level.

Typical Reflection Tracking

Specifications for the Test Set are typical. System performance for the PNA and Test Set are only characteristic and are intended as non-warranted information.

NOTE Typical specifications are based on 1 to 2 units performance. Refer to [Table 5](#), [Table 14 on page 42](#) and [Table 15 on page 43](#).

Table 5 Typical Reflection Tracking PNA-L

Frequency	Standard 700	Option 001	Option 002
300 kHz to 10 MHz ¹	-80	-100	-100
10 MHz to 4 GHz	-10	+2	+1
4 GHz to 6 GHz	-12	+1	+0
6 GHz to 10.5 GHz	-13	-2	-3
10.5 GHz to 13.5 GHz	-14	-3	-4
13.5 GHz to 15 GHz	-15	-3	-4
15 GHz to 20 GHz	-20	-13	-15

1. Generally improves at 3 MHz to -6 dBm.

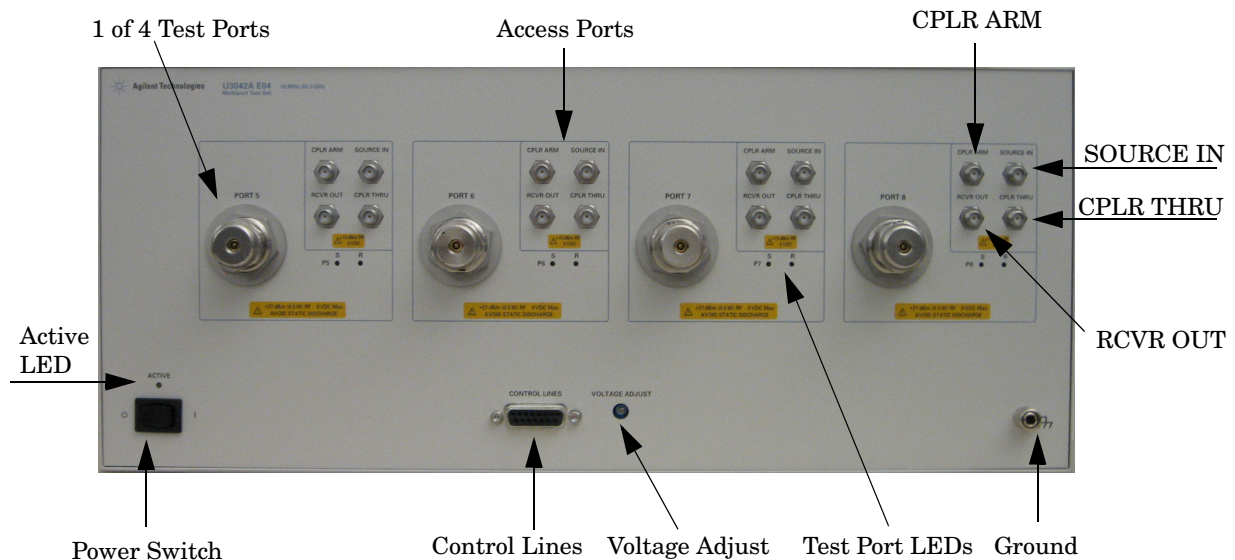
Table 6 Typical Reflection Tracking PNA-X

Frequency	Standard 700	Option 001	Option 002
10 MHz to 50 MHz ¹	-3	+5	+4
50 MHz to 500 MHz ¹	-5	+5	+4
500 MHz to 3.2 GHz	-10	+2	+1
3.2 GHz to 10 GHz	-12	-2	-3
10 GHz to 16 GHz	-17	-4	-5
16 GHz to 20 GHz	-20	-13	-15
20 GHz to 24 GHz	-22	-21	-23
24 GHz to 26.5 GHz	-25	-35	-37

1. Response from 10 MHz to 500 MHz is normal due to the PNA-X couplers in comparison to the Test Set bridges. The bridges have more gain in the coupled RF path.

Front and Rear Panel Features

Figure 3 U3042AE04 Front Panel



Test Ports – 3.5 mm Bulkhead (male)

- Port 5–8

Access Ports – 3.5 mm (female)

- CPLR ARM
- SOURCE IN
- CPLR THRU
- RCVR OUT

Ground

Chassis ground that is provided for ESD and safety connection.


Test Port LEDs

An illuminated LED indicates an active port in Source or Receiver mode. On the front panel “S” indicates Source test ports and “R” indicates Receiver test ports.

Control Lines and Voltage Adjust

For further information pertaining to control lines and voltage adjustments see [“DUT Control Lines”](#) on page 34.

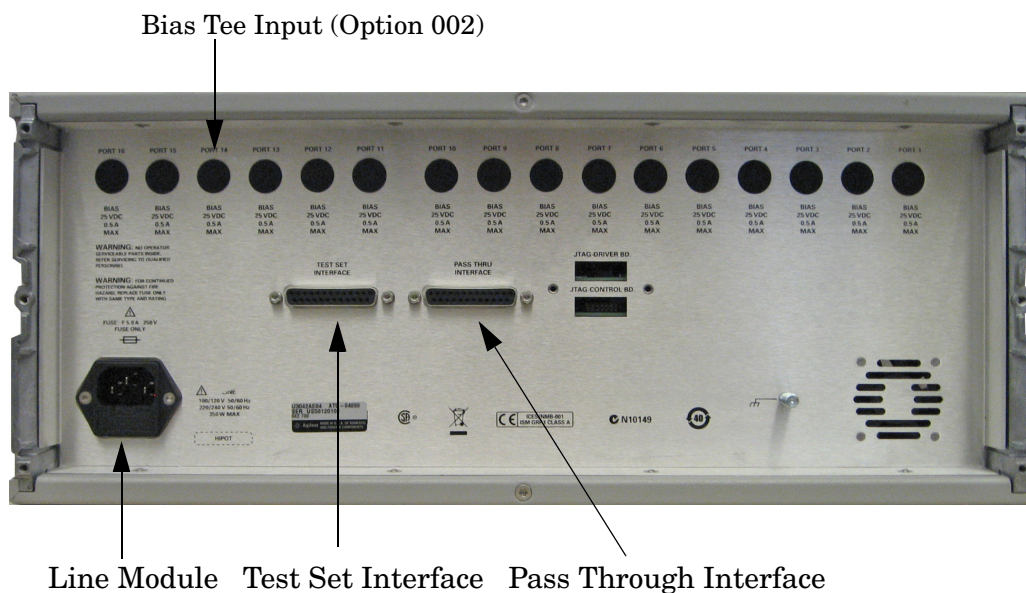
Power Switch

-  – Standby
- | – ON (Active LED On)

Active LED

- When the Test Set is connected and addressed by a PNA, the LED is On (illuminated).
- The LED is Off (not illuminated) when the Test Set power switch is in Standby, or not addressed by the PNA.

Figure 4 U3042AE04 Rear Panel



Bias Tee Input (Option 002)

BNC Input connectors for Option 002.

Pass Through Interface

The Pass Through Interface is used to connection to another Test Set.

Test Set Interface

The Test Set Interface connector is used to send address and data to the Test Set from the PNA.

Line Module

The line fuse, as well as a spare, reside within the line module. [Figure 5](#) illustrates where the fuses are located and how to access them.

Available Fuses

- Fuse (F 5 A/250V, 2110-0709) UL listed and CSA certified

WARNING For continued protection against fire hazard replace line fuse only with same type and rating. The use of other fuses or material is prohibited.

Figure 5 Line Module and Fuse



CAUTION Verify that the premise electrical voltage supply is within the range specified on the instrument.

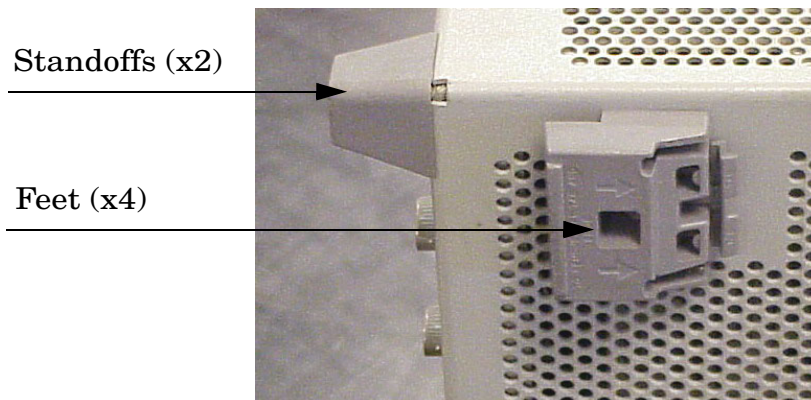
System Setup with N5230C

WARNING The opening of covers or removal of parts is likely to expose the user to dangerous voltages. Disconnect the instrument from all voltage sources before being opened.

Preparing the N5230C Network Analyzer

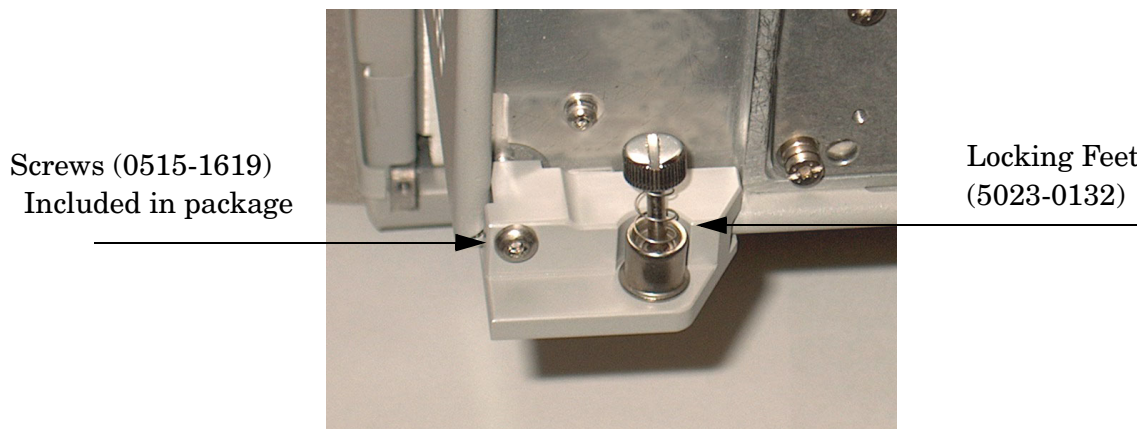
1. Remove the feet from the bottom of the analyzer. Refer to [Figure 6](#).
2. Remove the 2 lower standoffs and screws (0515-1619) from the rear panel on the analyzer.

Figure 6 Rear Bottom Feet



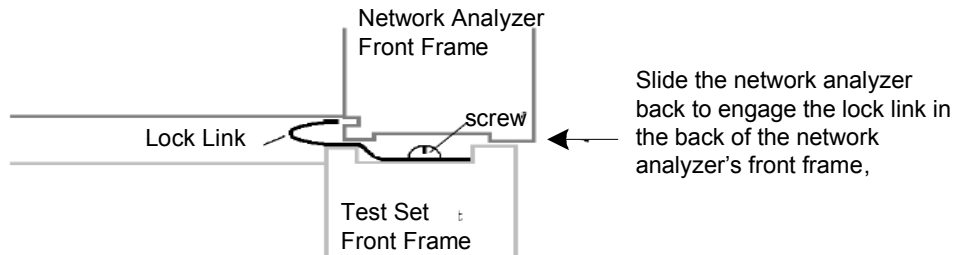
3. Install the two rear locking feet (5023-0132) onto the PNA-L, using the included screws (0515-1619), where the standoffs were removed. Refer to [Figure 7](#).

Figure 7 Install Locking Feet



- Place the PNA-L on top of the Test Set and ensure that the front frame of the network analyzer is positioned slightly forward of the locks that are attached to the Test Set. Slide the analyzer back so the locks engage the front frame of the analyzer. Refer to [Figure 8](#).

Figure 8 Locking the Analyzer



- Secure the PNA-L's lower locking feet to the Test Set's upper locking feet, using the spring-loaded screws on the locking feet. Refer to [Figure 9](#). If the analyzer's lower locking feet are not aligned with the screw holes in the Test Set's upper locking feet, loosen the screws securing the feet to the instrument slightly to align and tighten.

Figure 9 Locking Feet Screws



NOTE There are two Lock-Foot kits available. Refer to [“Contacting Agilent” on page 68](#) for ordering information.

- PNA – 5023-0132 (Kit includes locking feet and screws)
- Test Set – 5063-9253 (Kit includes lock links, locking feet and screws)

N5230C RF Interface Cable Connections

Figure 10 illustrates the Test Set configuration and cable connections to the PNA-L, and indicates the final two digits of the part number for each cable.

1. Connect the RF interconnect cables, supplied with this option, from the PNA-L to the Test Set. Torque each cable to 8 in-lb. Refer to Table 7 and Figure 10 on page 14. The Z5623-20418 are the short cables and the Z5623-20419 are the long cables.

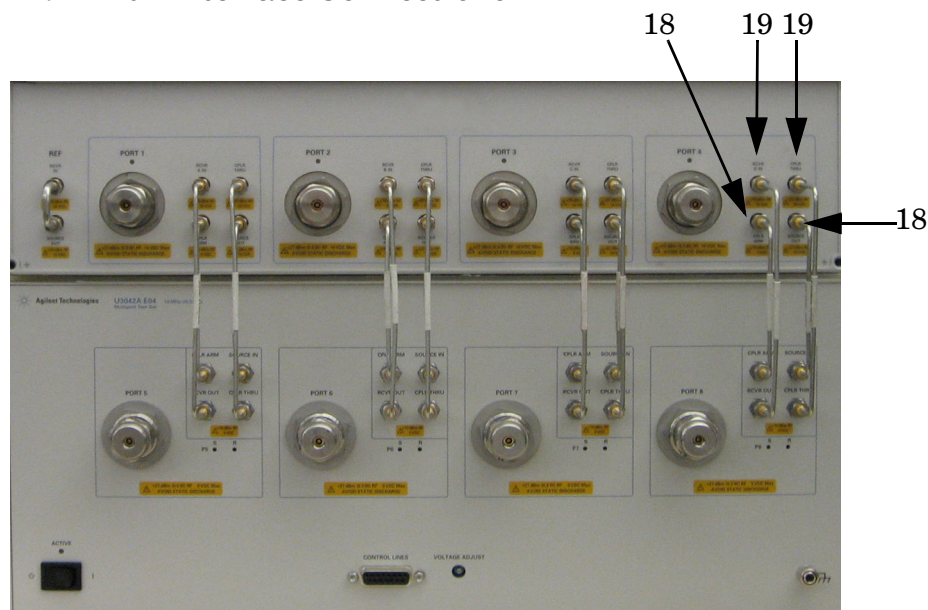
CAUTION Each end of the interconnect RF cables have a different length from the bend. When connecting the RF Interconnect cables be sure that the longer end (from the bend) is connected to the PNA.

CAUTION Over torque will cause damage to the Test Set and may cause the connectors to spin or become loose.

Table 7 PNA-L Interface Cable Connection (Option 030)

RF Cables	From PNA-L	To Test Set
Z5623-20418	SOURCE OUT	SOURCE OUT
Z5623-20418	CPLR ARM	CPLR ARM
Z5623-20419	CPLR THRU	CPLR THRU
Z5623-20419	RCVR IN	RCVR OUT

Figure 10 PNA-L RF Interface Connections



2. Connect the PNA Test Set I/O cable (8120-6818) to the Test Set Interface on the rear panel. Refer to Figure 17 on page 19.

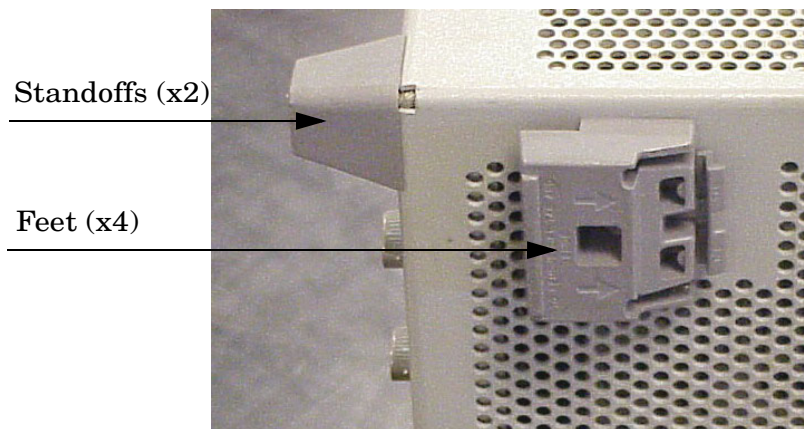
System Setup with N5242A

WARNING The opening of covers or removal of parts is likely to expose dangerous voltages. Disconnect the instrument from all voltage sources before being opened.

Preparing the N5242A Network Analyzer

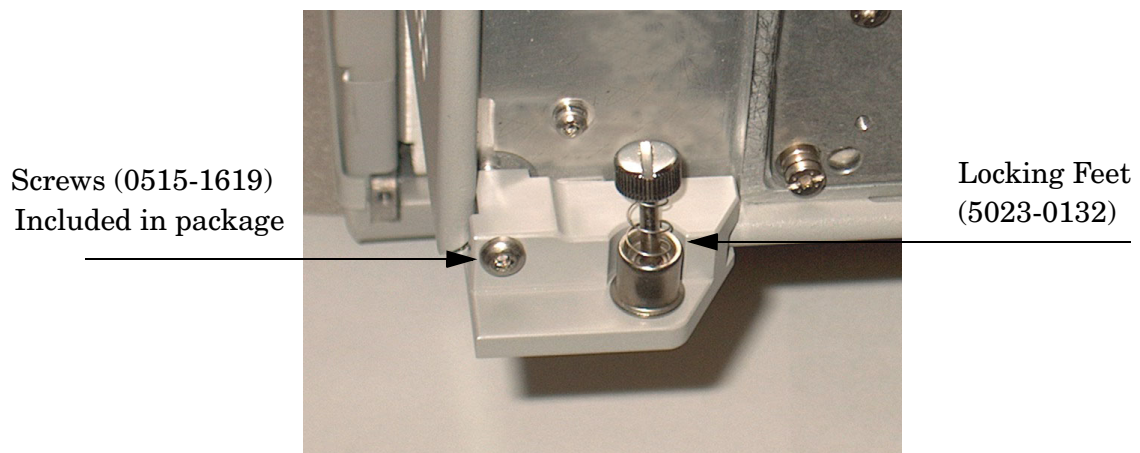
1. Remove the feet from the bottom of the analyzer. Refer to [Figure 11](#).
2. Remove the 2 lower standoffs and screws (0515-1619) from the rear panel on the analyzer.

Figure 11 Rear Bottom Feet



3. Install the two rear locking feet (5023-0132) onto the PNA-X, using the included screws (0515-1619), where the standoffs were removed. Refer to [Figure 12](#).

Figure 12 Install Locking Feet on PNA-X



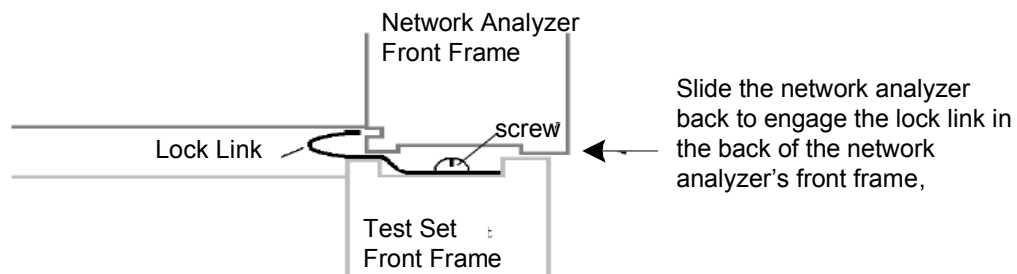
4. Install the two rear locking feet onto the Test Set. Looking at the front panel, the N5242-20138 is the right foot and the N5242-20139 is the left foot. Two screws (0515-2317) are included with this option. Refer to [Figure 13](#).

Figure 13 Install Locking Feet on Test Set



5. Place the network analyzer on top of the Test Set and ensure that the front frame of the analyzer is positioned slightly forward of the locks that are attached to the Test Set. Slide the analyzer back so the locks engage the front frame of the analyzer. Refer to [Figure 14](#).

Figure 14 Locking the Analyzer



- Secure the analyzer's lower locking feet to the Test Set upper locking feet, using the spring-loaded screws on the locking feet. Refer to [Figure 15](#). If the analyzer's lower locking feet are not aligned with the screw holes in the Test Set's upper locking feet, loosen the screws securing the feet to the instrument slightly to align and tighten.

Figure 15 Locking Feet Screws



NOTE There are two Lock-Feet kits available. Refer to [“Contacting Agilent” on page 68](#) for ordering information.

- PNA – 5023-0132 (Kit includes locking feet and screws)
 - Test Set – N5242-20138 (right foot) and N5242-20139 (left foot).
 - Screw – 0515-2317
-

N5242A RF Interface Cable Connections

Figure 16 on page 19 illustrates the cable configuration of the Test Set to the PNA-X. The cables have been supplied with Option 042.

1. Connect the RF interconnect cables from the PNA-X to the Test Set in the order listed. As you are connecting each cable, torque to 8 in-lb. The longer, straight end of each cable is connected to the Test Set. Refer to Table 8 and Figure 16 on page 19.

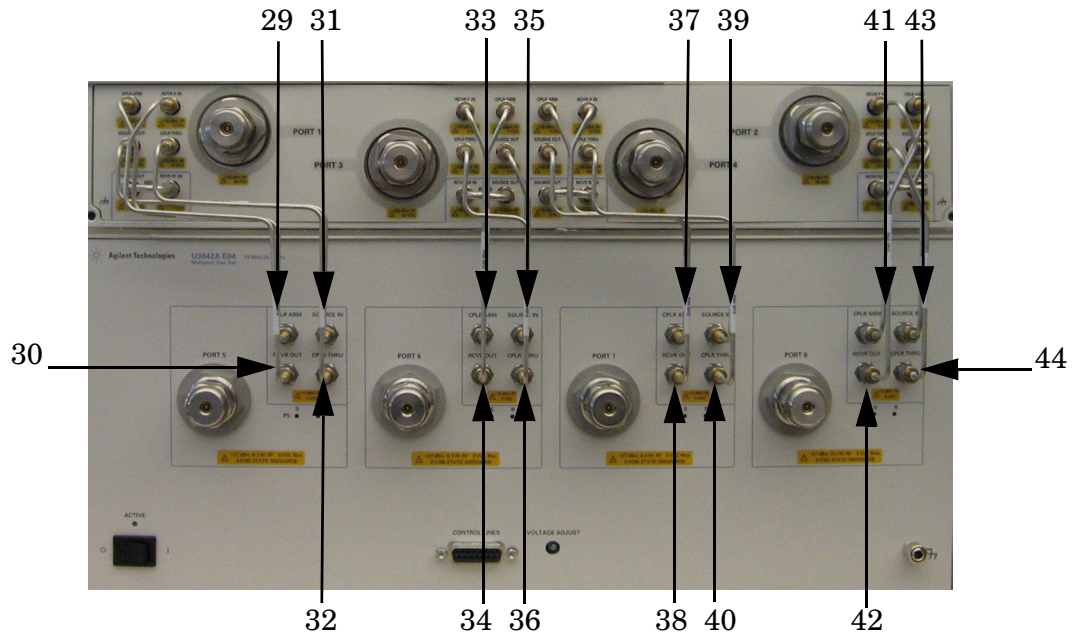
CAUTION Over torque will cause damage to the Test Set and may cause connectors to spin or become loose.

Table 8 N5242A RF Interface Cable Connection (Option 042)

Numeric Order	RF Cables	From PNA-X	To Test Set
1	U3042-20031	Port 1 SOURCE OUT	Port 5 SOURCE IN
2	U3042-20032	Port 1 CPLR THRU	Port 5 CPLR THRU
3	U3042-20029	Port 1 CPLR ARM	Port 5 CPLR ARM
4	U3042-20030	Port 1 RCVR A IN	Port 5 RCVR OUT
5	U3042-20035	Port 3 SOURCE OUT	Port 6 SOURCE IN
6	U3042-20033	Port 3 CPLR ARM	Port 6 CPLR ARM
7	U3042-20034	Port 3 RCVR C IN	Port 6 RCVR OUT
8	U3042-20036	Port 3 CPLR THRU	Port 6 CPLR THRU
9	U3042-20038	Port 4 RCVR D IN	Port 7 RCVR OUT
10	U3042-20037	Port 4 CPLR ARM	Port 7 CPLR ARM
11	U3042-20039	Port 4 SOURCE OUT	Port 7 SOURCE IN
12	U3042-20040	Port 4 CPLR THRU	Port 7 CPLR THRU
13	U3042-20041	Port 2 CPLR ARM	Port 8 CPLR ARM
14	U3042-20044	Port 2 CPLR THRU	Port 8 CPLR THRU
15	U3042-20043	Port 2 SOURCE OUT	Port 8 SOURCE IN
16	U3042-20042	Port 2 RCVR B IN	Port 8 RCVR OUT

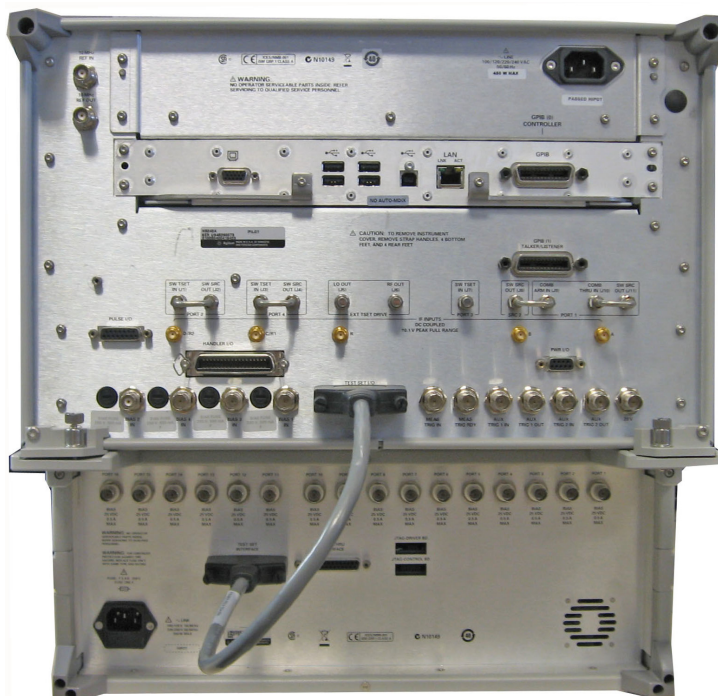
Figure 16 illustrates the final two digits of the part number for each cable. The cables must be connected in the numeric order listed in Table 8 on page 18.

Figure 16 PNA-X RF Interface Cable Connections



2. Connect the PNA-X Test Set I/O cable (8120-6818) to the Test Set Interface connector on the rear panel.

Figure 17 PNA-X Test Set I/O Cable Connection



Controlling the U3042AE04 with N5242A or N5230C

This section will describe how to configure and operate the Test Set with the PNA-X or PNA-L. Both will be referred to as the PNA-X in this section.

The Test Set is considered a “slave” instrument. A PNA-L or PNA-X must be used to control the Test Set. There are three methods to control the Test Set. Multiport mode is recommended due to calibration and ease of use.

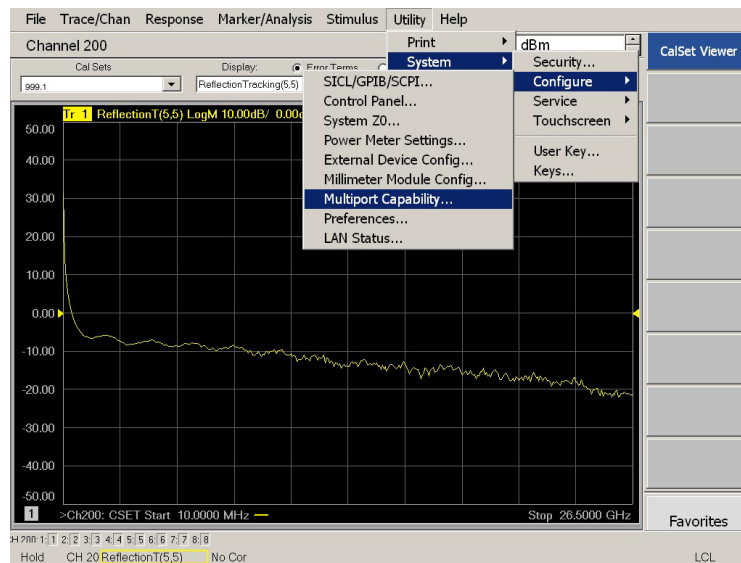
PNA Multiport Mode for Option 551

The PNA multiport mode selects the Test Set file that will enable the PNA to control the Test Set. The PNA-X multiport mode allows you to complete a N-Port calibration using the Cal Wizard application in the PNA. Refer to the PNA Help menu for more information.

How to Access Multiport Mode

1. The Option 551 must be installed for multiport capability. To access the multiport application select **Utility > System > Configure > Multiport Capability**. See [Figure 18](#).

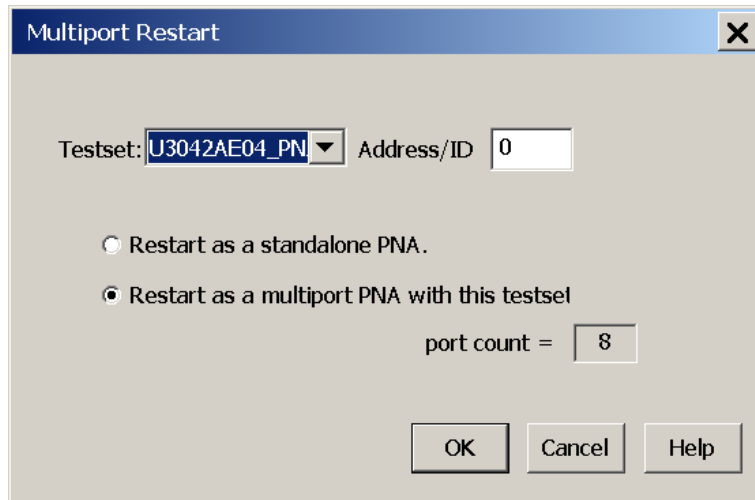
Figure 18 Selecting Multiport Mode



2. Select **U3042AE04** (8-Port System) from the drop-down menu and select **Restart as a multiport PNA with this testset > OK**. The PNA will restart the network application with the Test Set interface features.

If the Test Set is not available in the drop-down list, it will be necessary for you to copy the required Test Set file to the PNA hard drive. The current version of the Test Set files are available on the web at <http://na.tm.agilent.com/multiport>. Copy the appropriate file to `c:\program files\Agilent\Network Analyzer\testsets` directory.

Figure 19 Test Set Selection



External Test Set Control Feature

To verify that the network application has the Test Set interface features, select **Trace/Chan > Channel > Hardware Setup > External Test Set > Other**. The Test Set will be displayed as **External Test Set Control-U3042AE04**. Refer to [Figure 20](#) and [Figure 21](#).

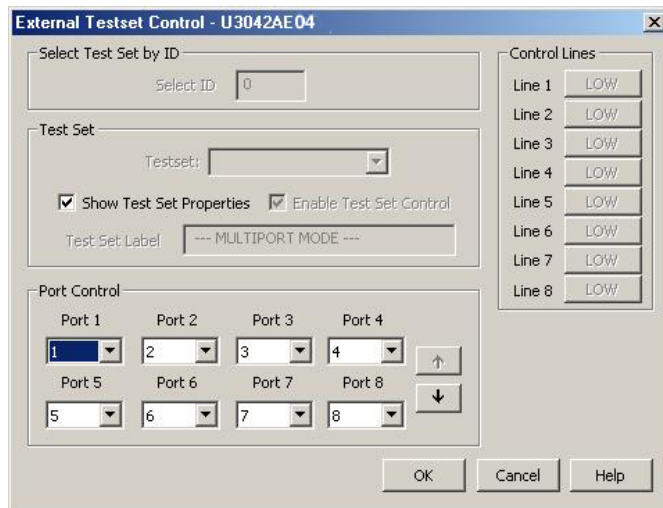
Figure 20 External Test Set Control



This menu will allow the physical Ports 1 thru 8 to be identified as any port for your convenience. For example; Port 5 can be named Port 2.

The **External Test Set Control-U3042AE04** also allows control of the DUT control lines, refer to [“DUT Control Lines” on page 34](#). To change the state from LOW to HIGH, select the graphical user interface (GUI) for the specific control (LINE 1 thru 8), then press **OK**. Each line can be controlled separately.

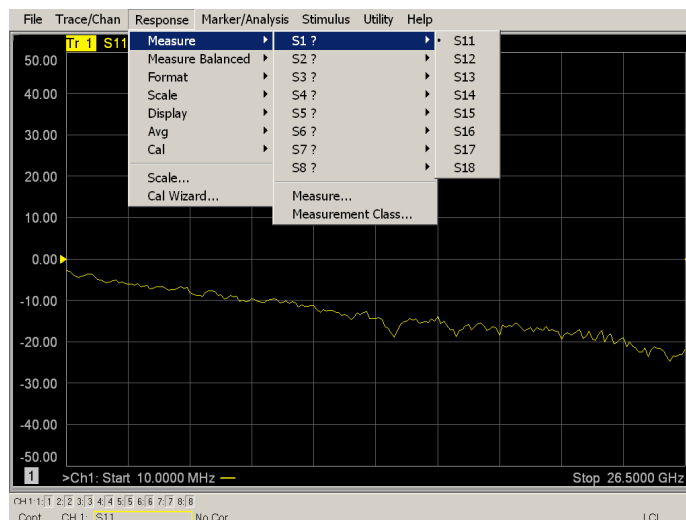
Figure 21 External Test Set U3042AE04 (Port 1 - 8)



Trace Measure S-Parameter

S-Parameter selection can be accomplished using **Response > Measure**. Use the drop-down menu to select 1 of 64 S-Parameters for the 8-Port system, see [Figure 22](#). The first number in the Sxx selection is the Receiver Port and the second number will be the Source Port. Any port can be selected to be the Receiver, Source or both, as in S11. The front panel R LED indicates the port is the Receiver and the S LED indicates the port is the Source.

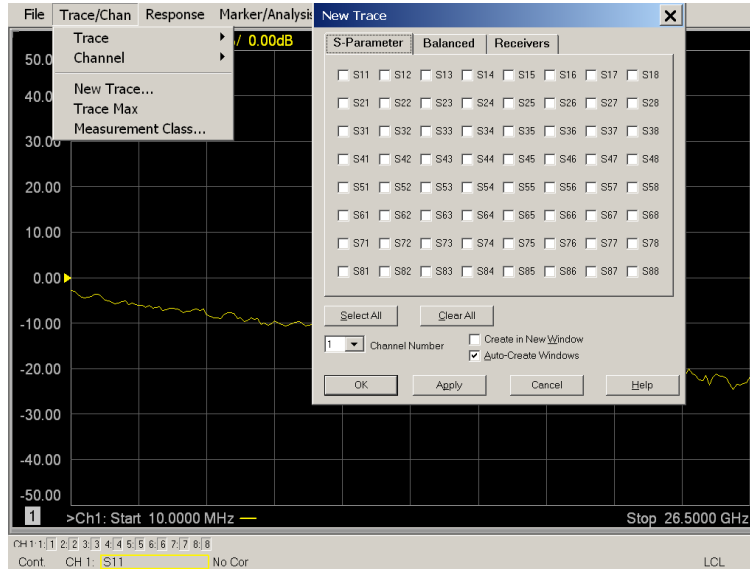
Figure 22 Trace Measure



New Trace Measure S-Parameter

S-Parameter Tab: Multiple S-Parameters can be made from the **New Measurement** menu. In the drop-down menu select **Trace/Chan > New Trace**. The dialog box allows the selection of any of the 64 S-Parameter's.

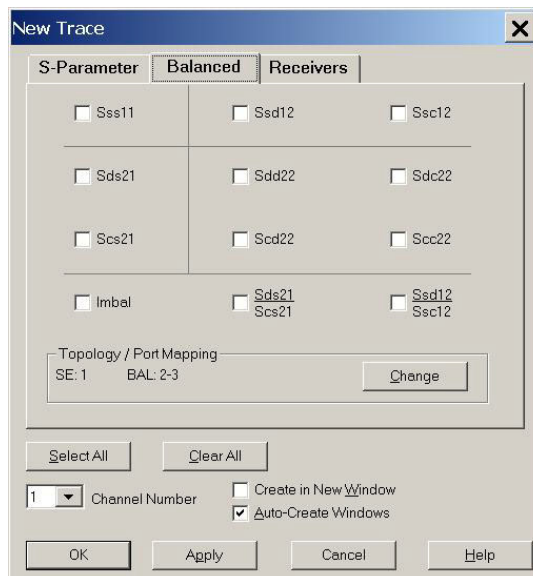
Figure 23 New Trace Measure



Balanced Tab: Balanced Measurements can be configured by selecting the Balance tab in the **New Measurement** menu.

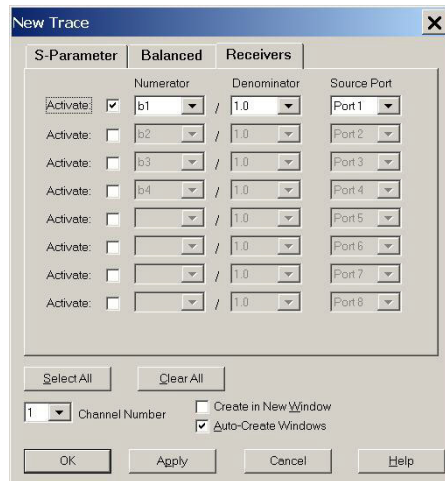
For more information on balanced (differential) component measurement, refer to the Application Note 1373-1 and 1373-2 (5988-5634EN and 5988-5635EN) at <http://www.home.agilent.com>. In the search menu type “Multiport and Balanced.”

Figure 24 Selecting Balanced Measurements



Receivers Tab: The S-Parameter measurements can be ratioed with selectable Denominators for each port and receiver. Refer to the standard PNA-X documentation for more information.

Figure 25 Receiver Measurements

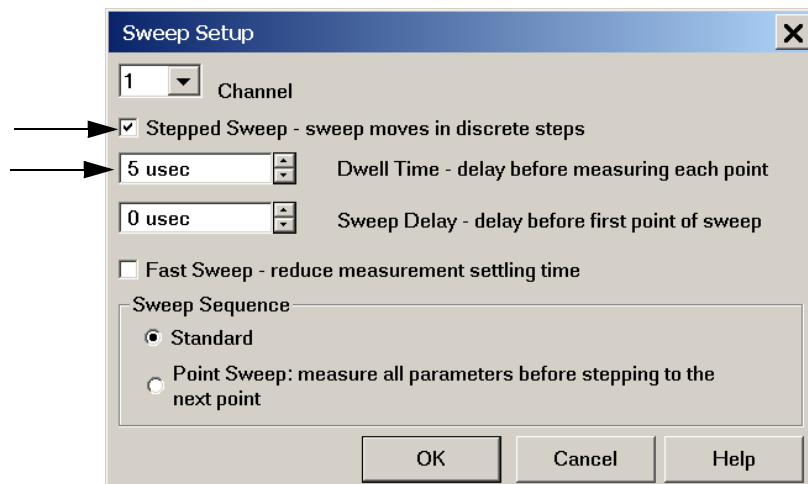


Sweep Setup for Multiport and Standalone PNA Modes

When the Test Set is connected to the PNA, it is recommended that the analyzer's Sweep Setup be configured to Stepped Sweep before calibrating. This is slower than the Analog Sweep, but is more accurate due to the extra electrical length of the Test Set and test port cables. Only Stepped Sweep is available on all PNA models.

1. On the PNA select **STIMULAS > Sweep > Sweep Setup**.
2. Select **Stepped Sweep**.
3. Set the **Dwell Time** to **5 μ s** > **OK**.

Figure 26 ECal Characterization



N-Port Calibration with N5242A or N5230C

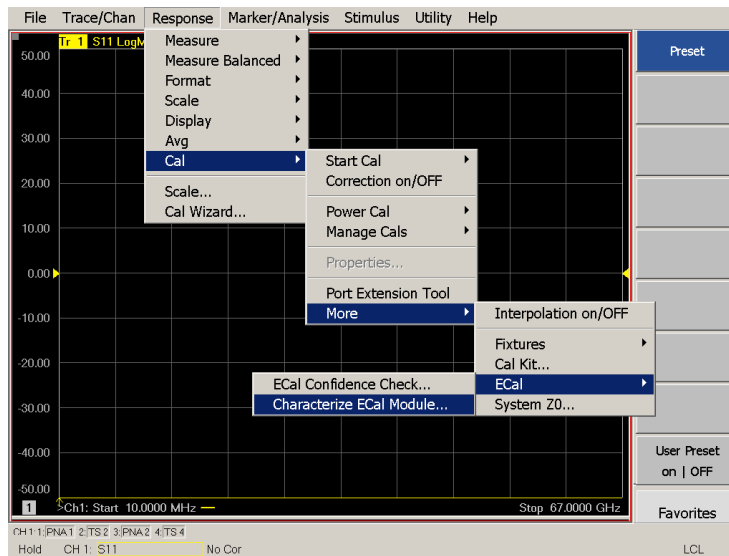
It is recommended that you perform an ECal characterization to minimize the connections required for multiple port calibration. The N4691B Option M0F is recommended with cable (85131F) if you are calibrating at the PNA and Test Set ports.

Characterize the ECal module with adapters that will not be used in the measurement of the DUT.

Calibrate at the end of the test port RF cables and any adapters that are used to connect the DUT. This removes the effect on the measurement of the DUT. Failure to do this will create ripple and other measurement errors.

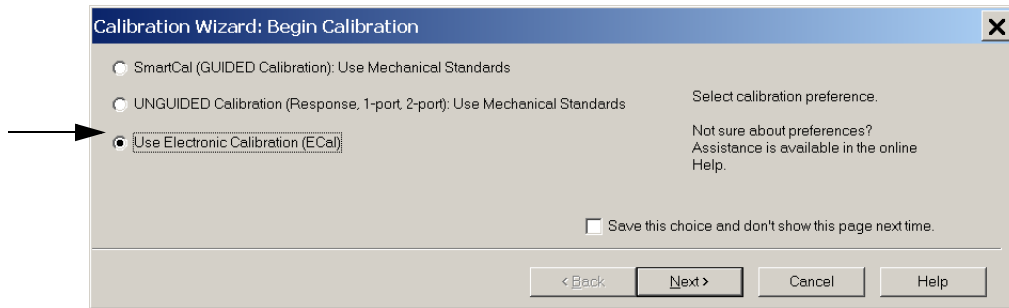
NOTE If measurement errors occur, ensure the newest version of firmware is installed on the PNA. Measurement errors can be a result of firmware algorithms. Consult with Agilent Service or firmware web page for the latest PNA, PNA-L or PNA-X Option 551 firmware revisions and history.
<http://na.tm.agilent.com/pna/firmware/firmware.htm>

Figure 27 ECal Characterization



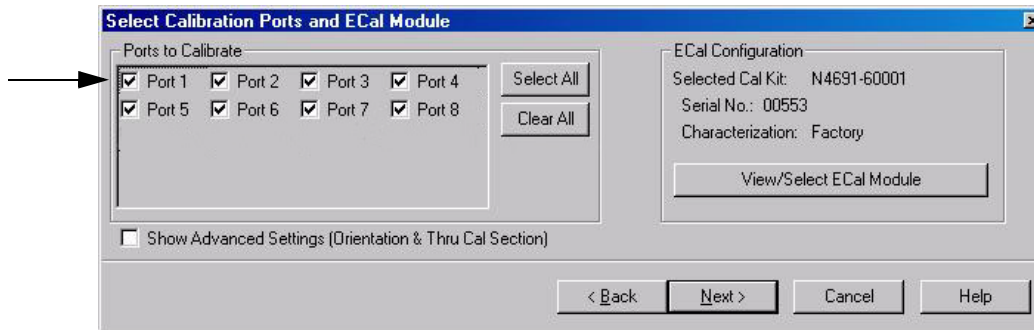
1. On the PNA select **Response > Calibration Wizard**.
 - a. If using a mechanical cal kit, select **SmartCal > Next**.
 - b. If using an ECal module, connect the ECal to an available PNA USB port and select **Use Electronic Calibration (ECal) > Next**.

Figure 28 Begin Calibration



2. Continue following the Cal Wizard prompts. In the Select Calibration Ports and ECal Module dialog box press **Select All**, or select the ports you are calibrating and press **Next**.

Figure 29 8-Port Calibration



3. Connect the ECal or the mechanical cal kit to the ports you are calibrating following the Cal Wizard prompts and press **Measure** after each connection.
4. At the Calibration Completed prompt, select **Save As User Calset**, type the name and press **Save**. See [Figure 39 on page 47](#).
5. After calibrating Test Set ports, use a quality load and short to verify the calibration on each port or end of the test cable. Measure reflection and confirm the return loss is as expected. If the result is not as expected, repeat the calibration without the Test Set and ensure that the PNA is in standard (non-multiport) mode.

N5242A or N5230C Interface Control

NOTE The interface control will not function properly when using the multiport mode. The multiport mode will reset the switch path commands of the interface control. It is recommended that the PNA be restarted in stand-alone mode if the interface control is being used.

This section includes only the features required in the interface control for the Test Set. Applications and feature information can be found in the PNA Help menu, “Interface Control.”

- Overview
- How to Access Interface Control Settings
- Interface Control dialog box

Other connectivity topics can be found in the PNA Help menu.

Overview of the Interface Control

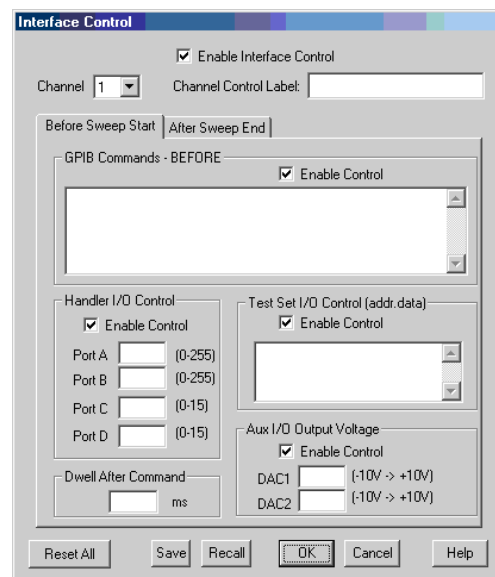
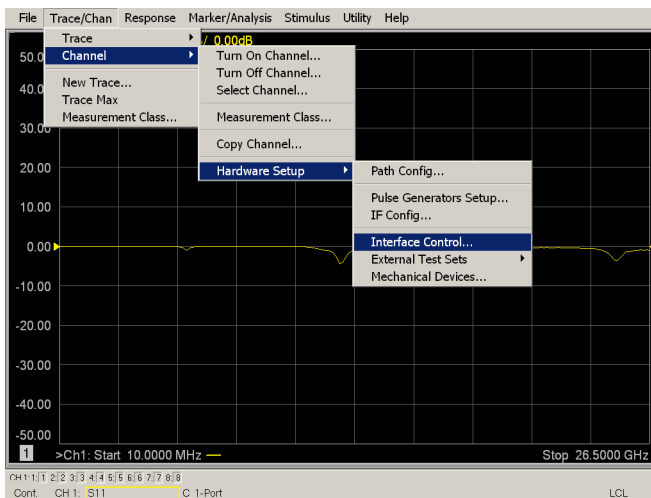
The Interface Control feature allows you to send data and remote commands to control external equipment using the GPIB, Material Handler I/O, Test Set I/O, and Auxiliary I/O without needing to create a remote program. Refer to the PNA Help menu, “Rear Panel Tour.”

- A unique set of control data can be sent for each channel. In addition, a unique set of control data can be sent before the channel sweep starts and after the sweep ends.
- Interface Control settings can be saved and recalled from the Interface Control dialog box or with Instrument State Save and Recall.
- Interface Control settings can be copied to other channels using Copy Channels.
- Control data can only be WRITTEN to the interfaces, NOT READ from the interfaces.
- Control data is sent in the following order and this order cannot be changed:
 1. GPIB Interface
 2. Material Handler Interface (not covered in this manual)
 3. Test Set Interface (not covered in this manual)
 4. Dwell Time (not covered in this manual)

How to Access Interface Control Settings

This section will describe how to configure and operate the Test Set with the PNA-X. To access the Interface Control application select **Trace/Chan > Channel > Hardware Setup > Interface Control** in the drop-down menu, and select **Enable Interface Control**.

NOTE The PNA-X Series Network Analyzer comes with the Interface Control application. Please review this application before connecting the Test Set to the PNA. Information regarding this application can be found in the PNA Help menu, Interface Control. The application is shown below.



NOTE While using Interface Control, the PNA-X must be in GPIB System Controller mode. Once this is complete you must restart the PNA application to go back to Talker/Listener.

Test Set I/O Address and Data using Control Interface with N5242A or N5230C

An Instrument Preset will reset all of the fields to their default settings.

NOTE If an error is encountered when sending Interface Control data, an error message is displayed on the PNA screen and the Channel Trigger State is set to Hold. You must fix the condition that caused the error, then change the Channel Trigger State to its original setting.

Enable Interface Control:

Enables and disables ALL Interface Control communication. When cleared (default setting) Interface Control is disabled and NO data is sent. To send data, the individual interfaces must also be enabled.

Test Set I/O Control (address data):

Provides control of the Test Set I/O Interface on the rear panel of the PNA-X. Used to control your Test Set.

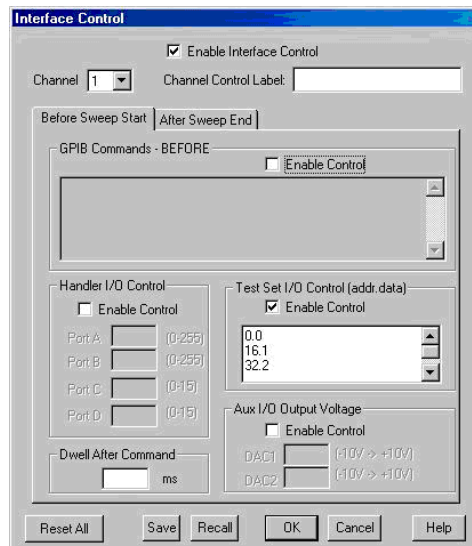
Positive integer is used to select switch position or state of DUT control interface line.

Address and data are separated by a period. Entries should be separated by a new line, or carriage return. The front panel Enter key inserts a new line into the field. The number of Test Set I/O entries that can be entered is limited by the available memory of the PNA-X. See [“U3042AE04 I/O Interface Commands” on page 39](#).

0.0

16.1

32.2



Channel 1:

Specifies the channel number for dialog settings. Each channel is configured individually. The list box illustrates the channels that currently have measurements. There must be at least one measurement present in order to make the settings.

Channel Control Label:

Specifies the label to be displayed on the PNA screen during the channel sweep.

Before Sweep Start– After Sweep End Tabs:

Commands /data for all four interfaces can be sent Before Sweep Start and After Sweep End. However, they are configured and enabled on separate tabs of the Interface Control dialog box. For example; to send GPIB commands Before and After a PNA sweep, the Enable Control check box must be selected and commands entered on both the Before Sweep Start and After Sweep End tabs.

Before Sweep Start:

The data is sent before the first trace on the channel begins sweeping.

After Sweep End:

The data is sent after the last trace on the channel completes sweeping.

Address:

Positive integer is used to specify switch path to be controlled. Address also specifies output on specific ports. Refer to [“U3042AE04 I/O Interface Commands” on page 39](#).

Dwell After Command:

Specifies a wait time, in milliseconds, after all commands to all interfaces are sent. Any positive integer is allowed. This is used to allow all external devices to settle before beginning a measurement. An erratic trace could indicate that more settling time is necessary.

Reset All:

Sets all fields on all channels to their default values.

Handler I/O Control and Aux I/O Output Voltage:

Provides I/O interface control through the rear panel of the PNA-X. Refer to the PNA-X Help menu for further information.

Save and Recall:

Saves and recalls the contents of the dialog box. If the Interface Control dialog box is populated with settings during an Instrument State Save, the settings are automatically recalled with the instrument state settings. Interface control uses an *.xml file type. An example file is stored on the PNA hard drive. You can recall it into the dialog, or you can open and edit it with a word processor, such as Word Pad.

OK:

Applies the settings and closes the dialog box.

Cancel:

Does not apply changes that were made and closes the dialog box.

NOTE Test Set I/O Commands can be found in [“U3042AE04 I/O Interface Commands” on page 39](#). The Address and Data commands can be entered into the Test Set I/O control.

N5242A or N5230C GPIB Control

The GPIB Command Processor feature allows you to send remote commands and data to the PNA rear-panel GPIB connector and Test Set I/O connector. More information regarding the GPIB Command Processor can be found in the PNA Help menu.

- Overview
- How to Access GPIB Command Processor
- GPIB Command Processor Console

Overview of the GPIB Control

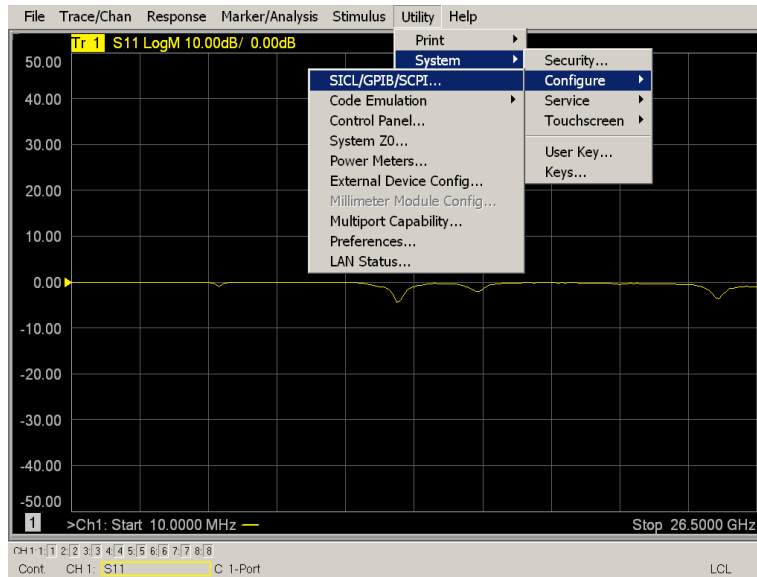
The GPIB Command Processor allows you to send address and data to control an external Test Set, without needing to create a remote program. The user is required to manually input address and data using the GPIB Command Processor Console in the PNA Help menu.

- GPIB Command Processor settings can not be saved or recalled.
- Address and data can be *written* from the GPIB Command Processor.

How to Access GPIB Command Processor

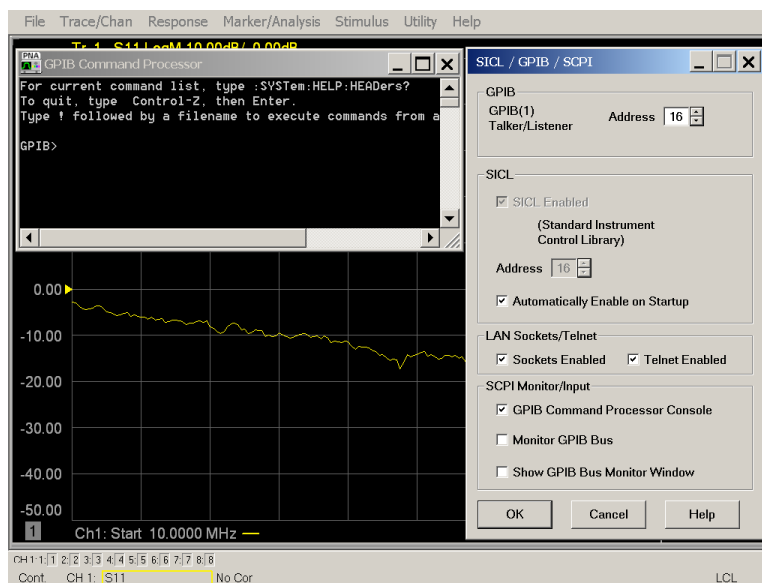
1. To access the GPIB Command Processor select **Utility > System > Configure > SICL/GPIB/SCPI**.

Figure 30 Utility Configure



2. Select **GPIB Command Processor Console > OK**.

Figure 31 GPIB Command Processor



GPIB Command Processor Console

Write Commands Once the GPIB Command Processor Console is open, commands can remotely control the external Test Set I/O connector by sending the following:

address: a integer number

data: a integer number

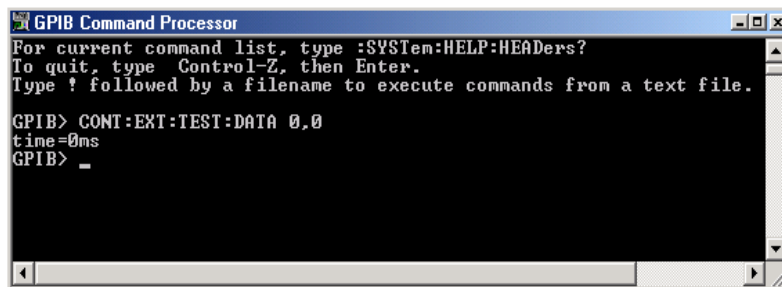
Address and data are separated by a comma. Commands should be separated by a new line, or carriage return.

For example:

```
CONT:EXT:TEST:DATA <address>,<data>
```

```
CONT:EXT:TEST:DATA 0,0
```

Example: CONT:EXT:TEST:DATA 0,0



```
GPIB Command Processor
For current command list, type :SYSTem:HELP:HEADers?
To quit, type Control-Z, then Enter.
Type ! followed by a filename to execute commands from a text file.

GPIB> CONT:EXT:TEST:DATA 0,0
time=0ms
GPIB> _
```

Refer to “U3042AE04 I/O Interface Commands” on page 39.

DUT Control Lines

The 15 pin female D-Sub connector on the front panel provides 8 latched data connections that can be used to control your DUT. An adjustable voltage source (+2 to +5 Vdc) is provided on the front panel. A positive or negative external source can be used. Refer to [Table 11](#) and [Figure 35 on page 38](#).

Setting the DUT Control Interface

This section describes how to control the DUT control lines. Refer to [“Controlling the U3042AE04 with N5242A or N5230C” on page 20](#). For more information regarding the control lines, see [Table 9](#) and [Table 10](#).

Table 9 Test Set DUT Control Address and Data

Address	Data	Data AD12-AD0	Description					Bit Data 0= +Voltage 1= -Voltage		
112	0	000000000000	ALL DUT Control Lines set to 0 or + voltage							
112	255	000001111111	ALL DUT Control Lines set to 0 or – voltage							
112	1	00000xxxxxxxB	DUT Control Line 1					0,1		
112	2	00000xxxxxxBx	DUT Control Line 2					0,1		
112	4	00000xxxxxBxx	DUT Control Line 3					0,1		
112	8	00000xxxxBxxx	DUT Control Line 4					0,1		
112	16	00000xxxBxxxx	DUT Control Line 5					0,1		
112	32	00000xxBxxxxx	DUT Control Line 6					0,1		
112	64	00000xBxxxxxx	DUT Control Line 7					0,1		
112	128	00000Bxxxxxxx	DUT Control Line 8					0,1		
Control Lines			Line 8	Line 7	Line 6	Line 5	Line 4	Line 3	Line 2	Line 1
Test Set I/O Bits			AD7	AD6	AD5	AD4	AD3	AD2	AD1	AD0
Bit Decimal Equivalent			128	64	32	16	8	4	2	1
Example 1 Data = 0			0	0	0	0	0	0	0	0
Example 2 Data = 21			0	0	0	1	0	1	0	1
X indicates unknown user bit state										
B indicates bit of interest										
To select a Test Set DUT control line configuration, all 8 DUT control lines must be set. To do this you must add AD7 to AD0 binary number and convert this to a decimal equivalent.										

NOTE All DUT control lines must be set with each command sent. Logic 0 = high

Figure 32 DUT Control Line Pin Assignment

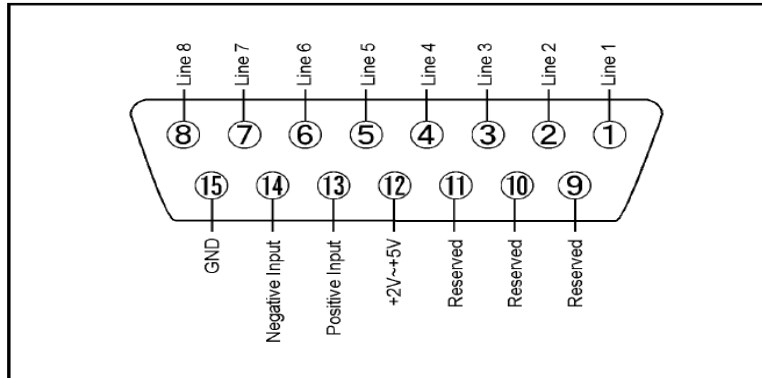


Table 10 DUT Control Line Pin Assignment

Pin Number	Signal Name	Description
1	Line 1	Output port of line 1
2	Line 2	Output port of line 2
3	Line 3	Output port of line 3
4	Line 4	Output port of line 4
5	Line 5	Output port of line 5
6	Line 6	Output port of line 6
7	Line 7	Output port of line 7
8	Line 8	Output port of line 8
9		Not used
10		Not used
11		Not used
12	+2 V to +5 V	The voltage input to pin 13. (The voltage can be varied by rotating the voltage adjustment trimmer on the front panel).
13	Positive Input	Input a signal that is outputted when each line is high from pin 12 or external dc power supply.
14	Negative Input	Input a signal that is outputted when each line is low from the external dc power supply. Able to output 0 V as low from the each line by connecting to pin 15.
15	Gnd	ground terminal

Setting the Variable Source Voltage

The output voltage of pin 12 can be varied from +2 to +5 V. Perform the following procedure to set the voltage:

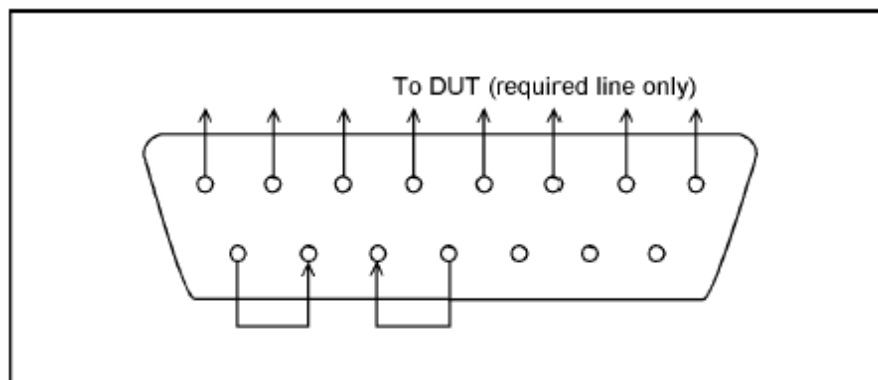
1. Turn On the Test Set.
2. Measure the voltage between pin 12 and 15 using a multimeter.
3. Rotate the voltage adjustment trimmer on the front panel until the multimeter indicates the appropriate voltage.

Connecting to the DUT Control Lines

Figure 33 illustrates an example of the connection between the DUT and the Test Set *without* an external dc power supply. Connect pin 12 to pin 13 for +5 V, and pin 14 to pin 15 to provide the ground path. Connect each DUT control line to the external device under test.

CAUTION You may only connect pin 12–13, and pin 14–15. Damage may result if any other path is short-circuited.

Figure 33 Control Line Connector



Using an External Power Supply

Figure 34 illustrates an example of the connection between the DUT and the Test Set *with* an external dc power supply. Input the High and Low signals from the external power supply to the Positive Input and Negative Input respectively, and connect each line to the control terminal of the DUT.

Turning On the Test Set using an External Power Supply.

1. Turn On the Test Set.
2. Connect the DUT.
3. Turn On the external power supply.

Turning Off the Test Set using an External Power Supply.

1. Turn Off the Power Supply.
2. Turn Off the Test Set.
3. Disconnect the DUT.

Figure 34 Test Set to the DUT and External DC Power Supply

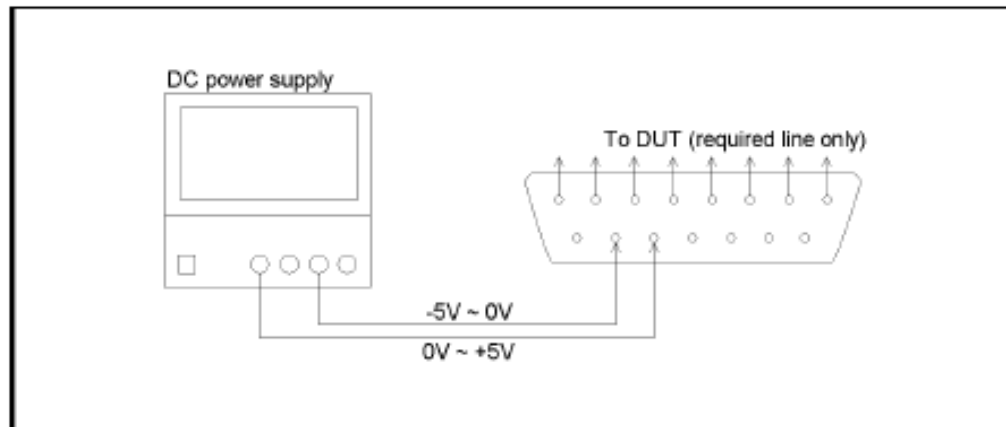
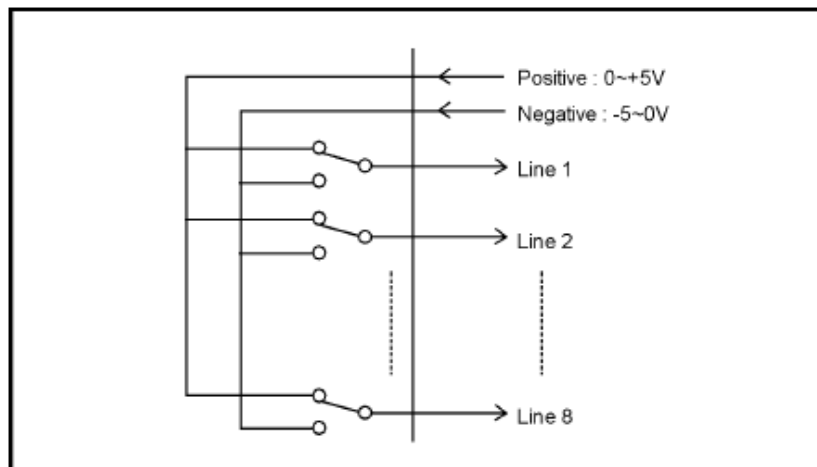


Table 11 DUT Control Specifications

Item	Specifications
Connector Shape	15-pin female D-Sub
Voltage Range:	
Positive Input	0 to +5 V
Negative Input	-5 to 0 V
Maximum Current	100 mA (in total of each line)
Impedance	< 10 Ω
Range of Variable Voltage	+2 to +5 V

Figure 35 Block Diagram of DUT Control

U3042AE04 I/O Interface Commands

Switch Address and Data

Refer to [Table 12](#), [Table 13 on page 40](#) and [Figure 36 on page 41](#) for information to set the internal switch paths of the Test Set. Additional information regarding the operation and descriptions for the internal switches can be found in [“Theory of Operation” on page 56](#).

A combination of the address and data value controls the source and receiver paths of the ports. To select a Test Set port configuration, both Source and Receiver switches must be set to complete the switch paths. Refer to the following examples.

Example 1:

If the ports have the same address, only one command is needed.

Ports 1 is the Receiver and Port 5 is the Source.

Source Port 5 = address 0, data 2, and Receiver Port 1 = address 0, data 16. Since the addresses are the same, add the data value of $2+16=18$. Send address 0 and data 18.

Example 2:

If the ports have different addresses, two separate address data commands must be used.

Port 5 is the Source and Port 6 is the Receiver.

Source Port 5 = address 0, data 2 and Receiver Port 6 = address 16, data 32.

Two separate commands must be sent, you may use the same dialog box. Send address 0 and data 2 in one command line, and address 16 and data 32 in the second line.

For further information refer to [“How to Access Interface Control Settings” on page 28](#) and [“How to Access GPIB Command Processor” on page 32](#).

Table 12 N5230C Source and Receiver Data

Address		Source Path Data ¹		Receiver Path Data ²	
		1	2	16	32
	Data	1	2	16	32
0	Ports	1	5	1	5
16	Ports	2	6	2	6
32	Ports	3	7	3	7
64	Ports	4	8	4	8

1. All Source switches are 100, 200, 300, and 400.
2. All Receiver switches are 101, 201, 301, and 401.

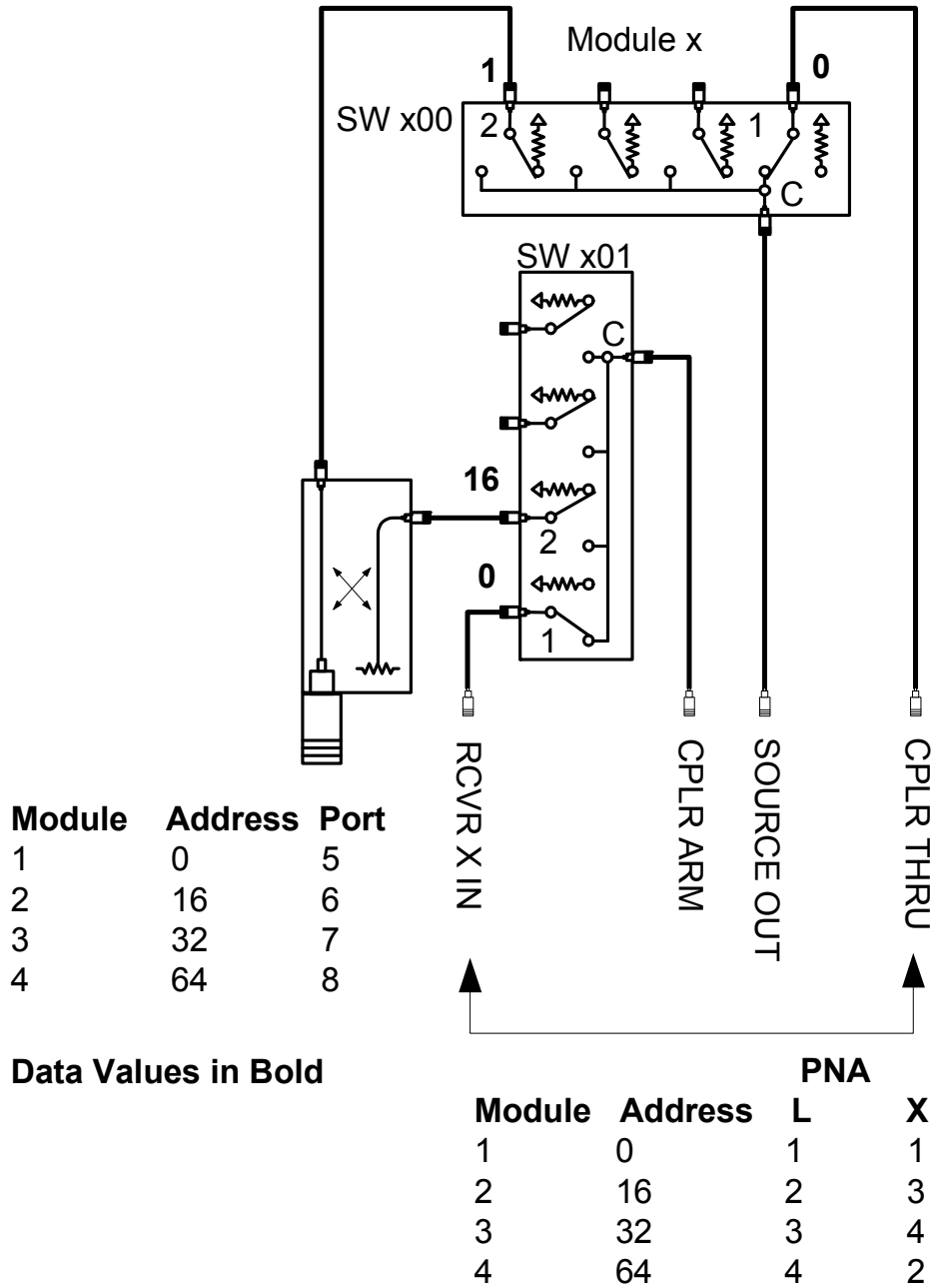
Table 13 N5242A Source and Receiver Data

Address		Source Path Data ¹		Receiver Path Data ²	
		1	2	16	32
	Data	1	2	16	32
0	Ports	1	5	1	5
16	Ports	3	6	3	6
32	Ports	4	7	4	7
64	Ports	2	8	2	8

1. All Source switches are 100, 200, 300, and 400.
2. All Receiver switches are 101, 201, 301, and 401.

Figure 36 Test Set Block Diagram

U3042AE04 Standard Block Diagram



Operational Check

This operational check is to confirm the Test Set and PNA operational performance. The operation verification limits provided ensure that your U3042AE04 and PNA are operating properly. Refer to [“Troubleshooting Operational Check Failures” on page 53](#) to ensure the RF interface cables are installed and working correctly before returning the Test Set for repairs.

Verification Limits

Specifications for the Test Set are typical. System performance for the PNA and Test Set are only characteristic and intended as non-warranted information. Only a functional certificate is provided for the Test Set.

It is recommended that you return your instrument to Agilent Technologies for servicing or repair if the Test Set and PNA performance exceed the operational verification limits.

Table 14 N5230C Operation Verification Limit for Reflection Tracking¹

Frequency	Standard ² Port 1-8	Option 001 or 002 Port 1-8
10 MHz to 4 GHz	-10.0 dB	0 dB
4 GHz to 6 GHz	-13.0 dB	-2.5 dB
6 GHz to 10 GHz	-16.0 dB	-5.0 dB
10 GHz to 15 GHz	-17.0 dB	-7.5 dB
15 GHz to 20 GHz	-25.0 dB	-15.0 dB

1. Reflection Tracking takes into account Source Loss, Receiver Loss, Margin, and PNA Mixer Cal.
2. A standard unit is one without Options 001 or 002.

Table 15 N5242A Operation Verification Limit for Reflection Tracking¹

Frequency	Standard ² Port 1-8	Options 001 or 002 Port 1-8
10 MHz to 4 GHz	-10.0 dB	0 dB
4 GHz to 6 GHz	-13.0 dB	-2.5 dB
6 GHz to 10 GHz	-16.0 dB	-5.0 dB
10 GHz to 15 GHz	-17.0 dB	-7.5 dB
15 GHz to 20 GHz	-25.0 dB	-15.0 dB
20 GHz to 26.5 GHz	-30.0 dB	-40 dB

1. Reflection Tracking takes into account Source Loss, Receiver Loss, Margin, and PNA Mixer Cal.
2. A standard unit is one without Options 001, 002.

NOTE If you suspect that your 8-Port configuration is not operating properly, ensure that all front RF jumper interconnect cables are correctly attached.

Equipment Required

The Agilent U3042AE04 requires that the user be familiar with the equipment and components listed in [Table 16](#).

This section provides an equipment list and configuration of the PNA and Test Set.

Table 16 Equipment List

Description	Qty
N4691A 3.5 mm ECal Module 10 MHz - 26.5 GHz (Option 00F or M0F) <i>or</i> N4691B 3.5 mm ECal Module 300 kHz - 26.5 GHz (Option 00F or M0F) <i>or</i> Mechanical cal kit 85052B or 85052D	1
N5230C 4-Port Network Analyzer (Option 245 and 551) <i>or</i> N5242A Option 400 and 551	1
Set of interconnect cables (PNA and Test Set), see " N5230C RF Interface Cable Connections " on page 14.	1

Operational Check Procedure

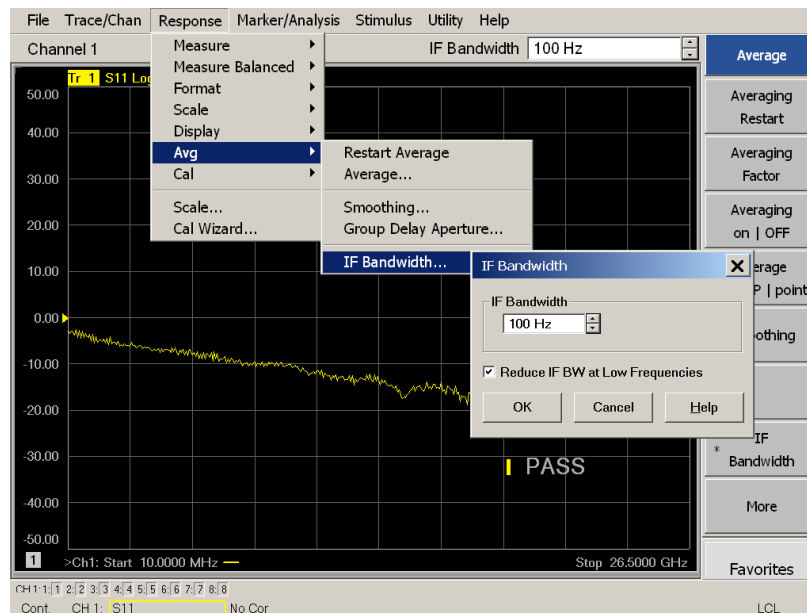
The sequence of this procedure is very important and must be followed or the performance accuracy and results may vary from the reference plots provided. Ensure that the Test Set is not connected to the PNA if you are performing a PNA Operator's Check. The PNA will indicate false failures if the Test Set is connected.

Preparing the N5242A or N5230C

1. Connect the Test Set to the 4-Port PNA-X using the interconnect cables as shown in [Figure 16 on page 19](#) and [Table 8 on page 18](#). If you are using a N5230C, refer to [Figure 10 on page 14](#) and [Table 7 on page 14](#).
2. Turn On the Test Set.
3. On the PNA, select **Response > CAL > Manage CALS > CAL Set**. Delete or Rename any Cal Sets titled "999.1" thru "999.8" (8-Port), although it is unlikely that you will find Cal Sets with these names.
4. Verify that the PNA is in 8-Port. See the bottom of the measurement window.
 - a. If only four S-Parameters are listed, select **Utility > System > Configure > Multiport Capability**. Select **Restart as multiport PNA with this testset** and select **U3042AE04** (8-Port) from the drop-down menu > **OK**. Refer to [Figure 19](#).
5. Press **Preset**.
6. Verify that the **[Stop Frequency]** is set to **[26.5 GHz]**, or **[20 GHz]** for the N5230C.
7. Verify that the **[Start Frequency]** is set to **[10 MHz]**.
8. Verify that the **[Power]** is to set to **[-5 dBm]**.

9. Select **Response > Avg > IF Bandwidth > 100 Hz > OK.**
10. Select **Stimulus > Sweep > Number of Points > 401.**
11. Connect the ECal module to an available PNA USB port on the front or rear panel.
Refer to [Figure 16 on page 19](#). This procedure assumes you are using a ECal. If you are not, see [“N5242A or N5230C 1-Port Calibration and Verification Procedure” step 2](#).
12. Allow the ECal module, Test Set and PNA to warm up for a minimum of 30 minutes.

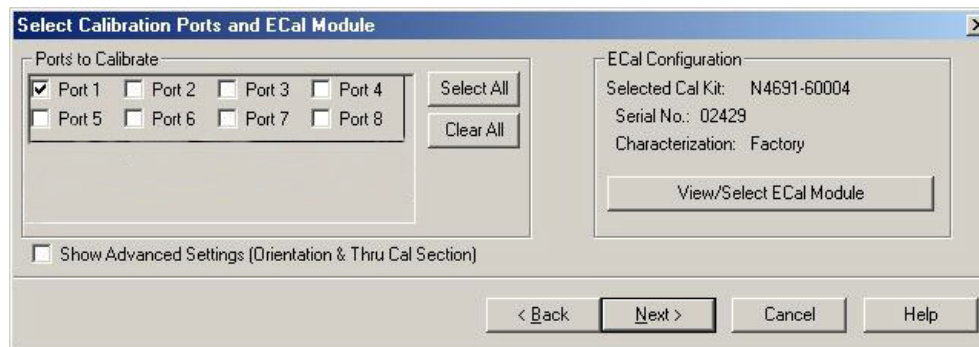
Figure 37 Setting the IF Bandwidth



N5242A or N5230C 1-Port Calibration and Verification Procedure

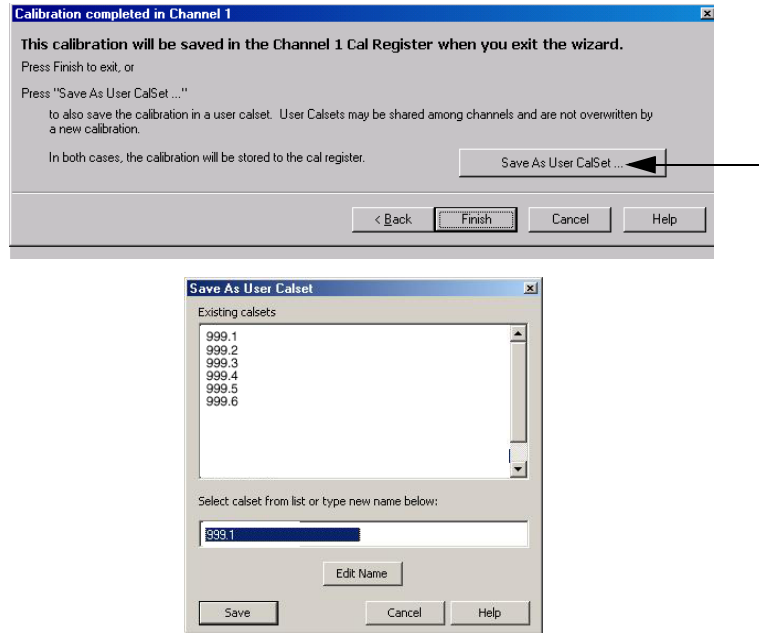
1. Connect the ECal or the mechanical cal kit to Port 1 or the port you are testing. Refer to [Figure 2 on page 2](#). Torque to 8 in-lb. For further information refer to the Help menu, see [Figure 38](#).
2. Perform a 1-Port Calibration on Port 1. On the PNA, select **Response > CAL > Start Cal > Calibration Wizard**.
 - a. If using a mechanical cal kit, select **SmartCal > Next**.
 - b. If using an ECal module, connect the ECal to a PNA USB port. Select **Use Electronic Calibration (ECal) > Next**.
3. Continue following the Cal Wizard prompts. In the Select Calibration Ports and ECal Module dialog box press **Clear All** and select **Port 1**, then press **Next**.

Figure 38 1-Port Calibration



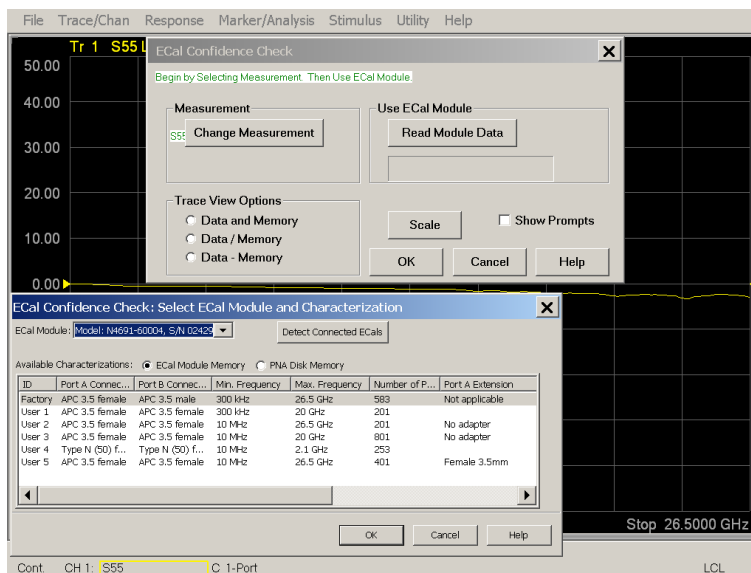
4. Continue to follow the prompts until the Calibration Completed dialog box appears.
5. At the Calibration Completed prompt, select **Save As User Calset** and type the name **999.1**. Overwrite the Calset if it already exists and press **Save**.

NOTE If you do not have a key board, select **Save As User Calset > Edit Name** and save as **999.x**. X is the port number you are calibrating. Refer to [Figure 39 on page 47](#). Use the numeric keypad on the PNA front panel to enter “999.1.”

Figure 39 Calibration Complete

6. Repeat [step 1](#) thru [step 5](#) (1-Port Calibration Procedure) for Ports 2 thru 8. When finished, there should be eight Cal Sets saved with the titles “999.1” thru “999.8” (8-Port).

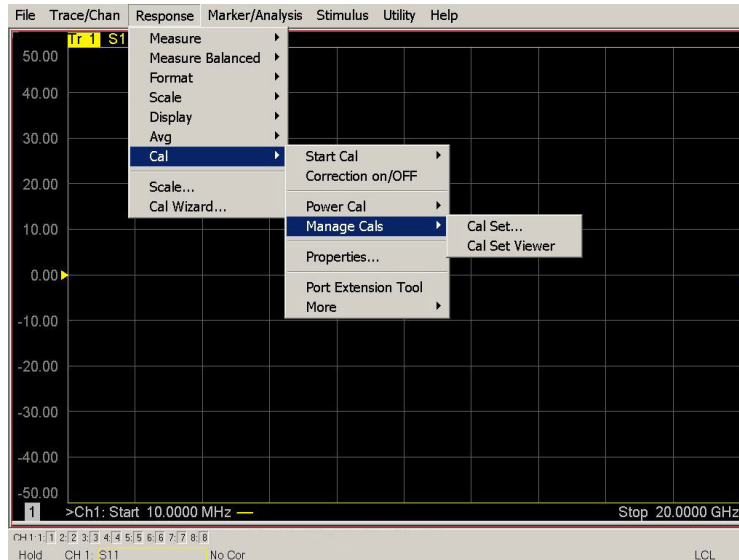
If you are using an ECal module you can verify the individual port calibration by selecting **Response > CAL > More > ECAL > ECAL Confidence Check**. Select **Change Measurement** and select the test port **S-Parameter > Apply > OK**. Then select **Read Module Data**. For further information refer to the Help menu.

Figure 40 ECAL Confidence Check

7. Select **Trace/Chan > Trace > Delete Trace**. There should be no traces on the PNA screen.

8. To launch the Cal Set Viewer toolbar. Select **Response > CAL > Manage CALS > CAL Set Viewer**.

Figure 41 Calibration, Cal Set Viewer



9. From the Cal Sets drop-down menu, select **999.1** and select **Enable**. Select the **Reflection Tracking(x,x)**, where x,x is the port being tested, term in the center drop-down menu and ensure that the **Enable** and **Error Terms** are selected.

NOTE You may also create a table on the PNA and enter the limit line stimulus and response values. Select **Marker/Analysis > Analysis > Limit Test > Limit Test ON** and **Limit Line ON > Global pass/fail display ON**, then press **Show Table**. See [Figure 42](#) and [Figure 43](#) on page 49.

Figure 42 PNA-X Setting the Test Limits

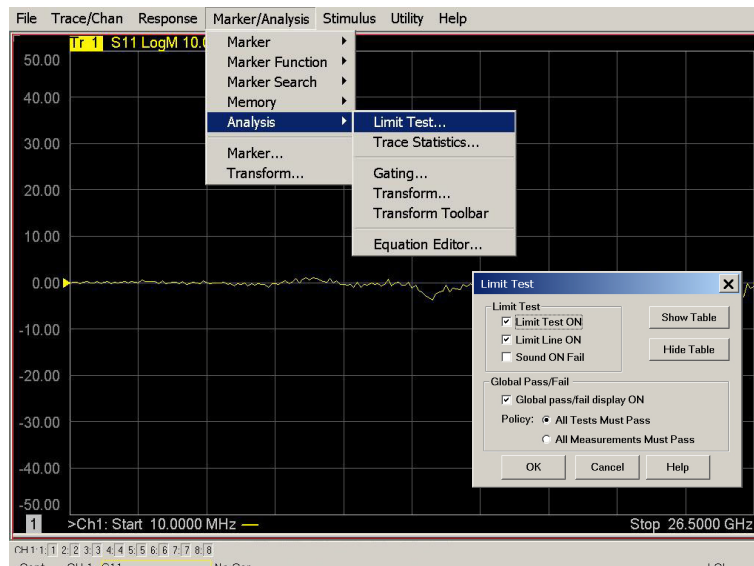
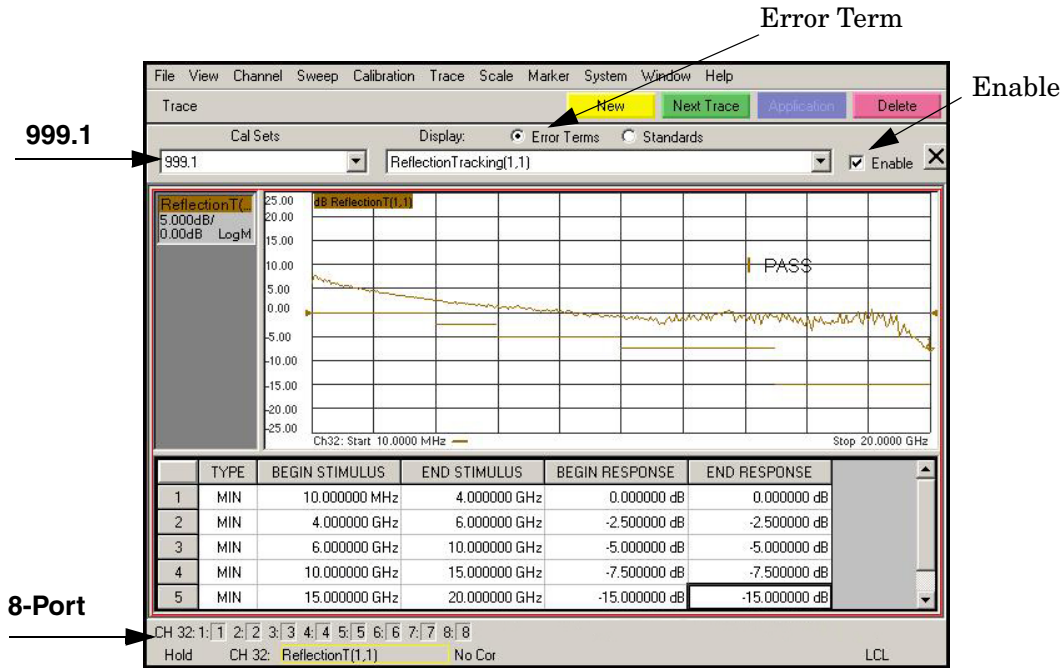


Figure 43 Option 001 or 002 Reflection Tracking Trace (Port 1-8) with PNA-L



10. Compare the Reflection Tracking (1,1) trace to the appropriate limits in [Table 14 on page 42](#). This can be done using Limit Lines, select **Marker/Analysis > Analysis > Limit Test > Limit Test ON** and **Limit Line ON > Global pass/fail display ON**, then press **Show Table**. The trace should be above the limit. **PASS** will be displayed on the screen if the limit lines are used. If you are using an N5230C, refer to [Figure 43](#), [Figure 48](#) and [Figure 49 on page 52](#).

11. Repeat [step 9](#) and [step 10](#) for Cal Sets “999.1” thru “999.8” (8-Port).

Figure 44 Option 001 or 002 Reflection Tracking Trace (Port 1-4) with PNA-X

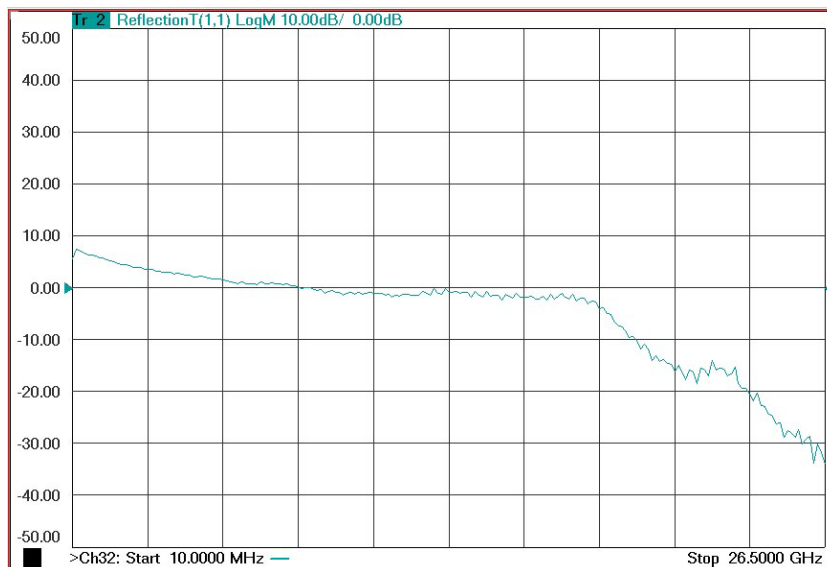
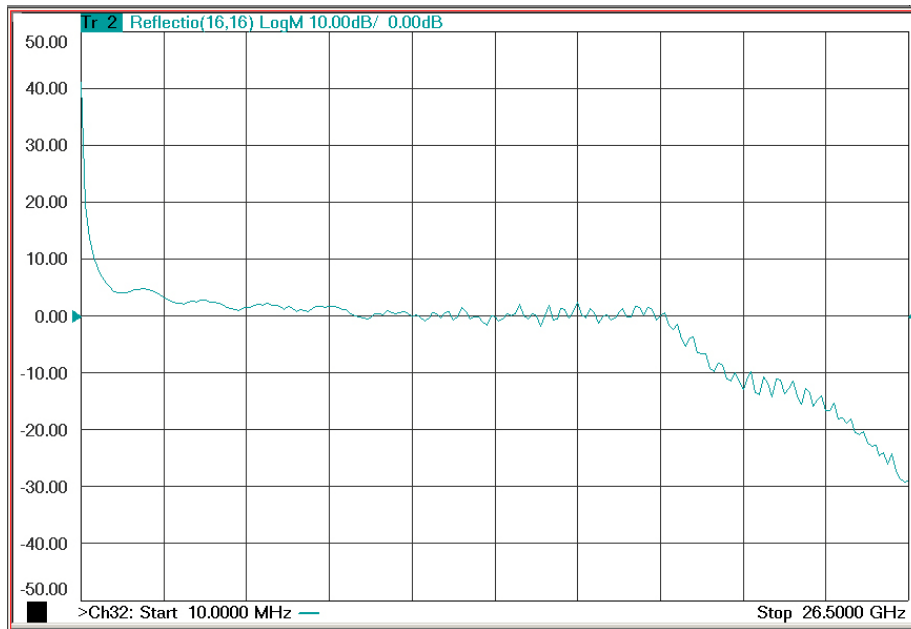


Figure 45 Option 001 or 002 Reflection Tracking Trace (Port 5-8) with PNA-X



NOTE Response from 10 MHz to 500 MHz is normal due to the PNA-X couplers in comparison to the Test Set bridges. The bridges have more gain in the coupled RF path.

Figure 46 Standard Reflection Tracking Trace (Port 1-4) with PNA-X

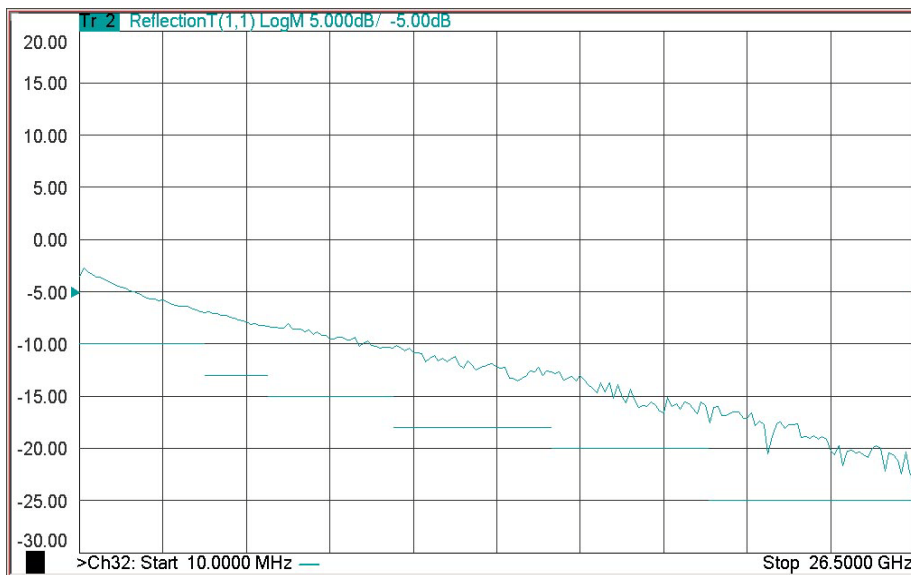
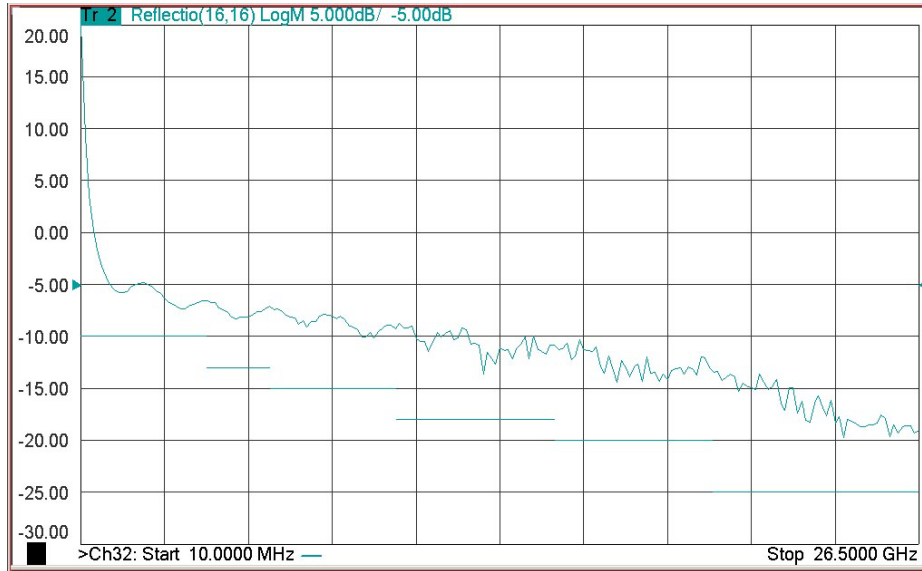


Figure 47 Standard Reflection Tracking Trace (Port 5-8) with PNA-X



NOTE Response from 10 MHz to 500 MHz is normal due to the PNA-X couplers in comparison to the Test Set bridges. The bridges have more gain in the coupled RF path.

Figure 48 Option 001 or 002 Reflection Tracking Trace (Port 1-8) with PNA-L

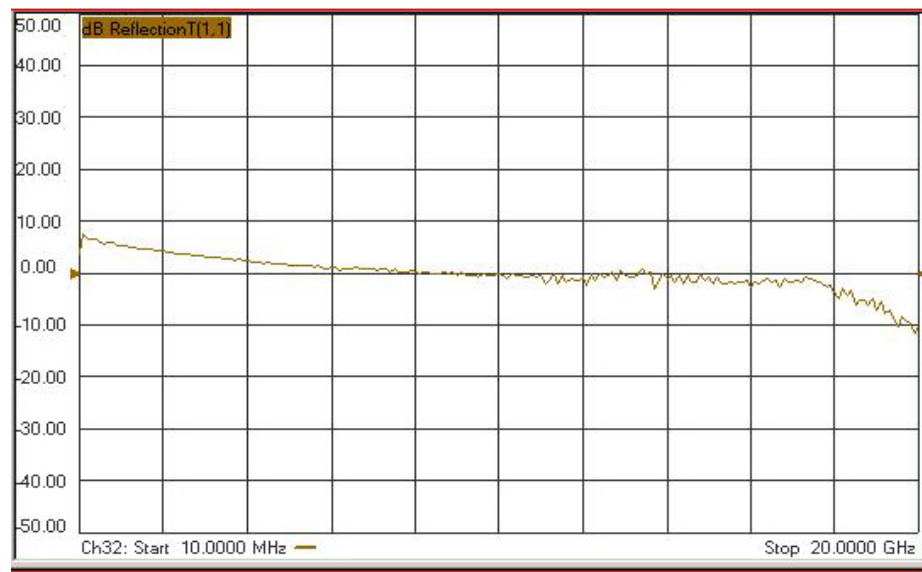
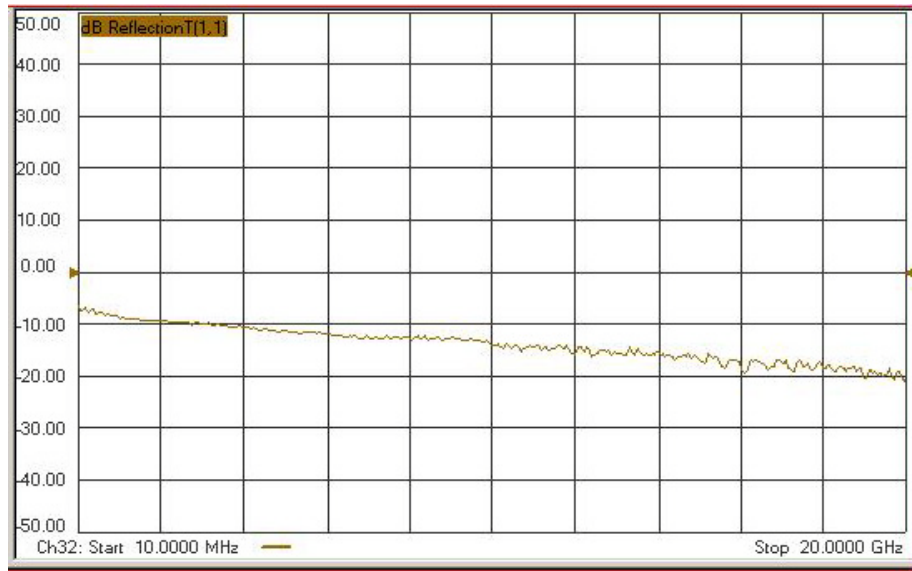


Figure 49 Standard Reflection Tracking Trace (Port 1-8) with PNA-L



Troubleshooting Operational Check Failures

If your test results fail the Operational Check limits, verify following:

1. Ensure that the Test Set is turned on and connected properly to the PNA.
2. Check all appropriate PNA and Test Set connectors for damage, cleanliness, and proper torque.
3. Repeat the relevant 1-Port calibrations.
4. Verify that the stand-alone PNA is operating properly and meeting its published specifications.

Interconnect Cable Verification

1. Connect the Test Set to the PNA and select Multiport mode.
2. Verify the Source Interconnect RF cables (Source Out and CPLR THRU).
 - a. Remove the Receiver and CPLR ARM interconnect cables and install the standard PNA jumpers.
 - b. Connect two RF cables on the PNA, Port-1 to Port-2 and Port-3 to Port-4.
 - c. Set the PNA to measure Trace S12, S21, S34 and S43, and verify that there are no power holes. If S12, or S34 has a power hole check the Port-2, or Port-4 Source interconnect cables and Test Set connectors for damage. If S21, or S43 has a power hole check the Port-1, or Port-3 Source interconnect cables and Test Set connectors for damage.
3. Verify the Receiver Interconnect RF cables (Receiver A IN or B IN and CPLR ARM).
 - a. Re-install the Receiver and CPLR ARM interconnect cables.
 - b. Remove the Source Out and CPLR THRU interconnect cables and install the standard PNA jumpers.
 - c. Set the PNA to measure Trace S12, S21, S34 and S43. Verify that there are no power holes. If S12 or S34 has a power hole check Port-1, or Port-3 Receiver Interconnect cables and Test Set connectors for damage. If S21, or S43 has a power hole check Port-2, or Port-4 Receiver Interconnect cables and Test Set connectors for damage.
4. If the problem still exists, connect the standard jumpers to the PNA (Source and Receiver) and verify the Source Out to CPLR THRU and A/B IN to CPLR ARM switch paths.
 - a. Connect two RF cable, one to Port-1 and one to Port-2.
 - b. Set the PNA to measure trace S12 (all standard jumpers connected).
 - c. Connect the Port-1 cable to Source Out and Port-2 cable to CPLR THRU connectors on the Test Set. If a power hole still exists refer to [“Contacting Agilent” on page 68](#).
 - d. Connect Port-1 to Receiver A IN or B IN and Port-2 to CPLR ARM connectors on the Test Set. If a power hole still exists refer to [“Contacting Agilent” on page 68](#).

Service Information

Refer to [“Contacting Agilent”](#) on page 68.

WARNING **No operator serviceable parts inside. Refer servicing to qualified personnel. To prevent electrical shock do not remove covers.**

WARNING **These servicing instructions are for use by qualified personnel only. To avoid electrical shock, do not perform any servicing unless you are qualified to do so.**

Replaceable Parts

Special options are built to order, long lead times may be encountered when ordering replacement parts.

Description	Agilent Part Number
Test Set I/O Cable	8120-6818
RF Cable, Semi-rigid	Z5623-20418
RF Cable, Semi-rigid	Z5623-20419
Port 1 SOURCE OUT	U3042-20031
Port 1 CPLR THRU	U3042-20032
Port 1 CPLR ARM	U3042-20029
Port 1 RCVR A IN	U3042-20030
Port 3 SOURCE OUT	U3042-20035
Port 3 CPLR ARM	U3042-20033
Port 3 RCVR C IN	U3042-20034
Port 3 CPLR THRU	U3042-20036
Port 4 CPLR ARM	U3042-20037
Port 4 RCVR D IN	U3042-20038
Port 4 SOURCE OUT	U3042-20039
Port 4 CPLR THRU	U3042-20040
Port 2 CPLR ARM	U3042-20041
Port 2 SOURCE OUT	U3042-20043
Port 2 RCVR B IN	U3042-20042
Port 2 CPLR THRU	U3042-20044
Screw	0515-2317
PNA-X Test Set Rear Lock Feet (right)	N5242-20138
PNA-X Test Set Rear Lock Feet (left)	N5242-20139
PNA-L or PNA-X Locking Feet	5023-0132
PNA-L Test Set Locking Feet	5063-9253
User's Guide (Option E04)	U3042-90008

Theory of Operation

The following is a description of the operation of the Test Set. Reference the Test Set block diagrams shown in [Figure 50 on page 59](#). This section assumes the user has a general understanding of couplers, switches, and network analyzers.

RF Coupler/Bridges

The Test Set uses four coupler/bridges (5087-7716) on the front panel for RF Test Ports 5 - 8. The coupler/bridges provide the signal separation of the source and receiver paths, using resistor networks. The Test Set ports can receive from or stimulate a signal to the DUT.

The RF Test Port connectors are male 3.5 mm. The coupling factor is approximately -16 dB for the Coupled Arm (minimum -22 dB and max -12 dB at 26.5 GHz). The insertion loss through the CPLR THRU path is typically < 4 dB at 26.5 GHz. Do not use excessive RF power or DC voltage, or damage may occur to the internal resistors.

RF Switch Components

The Test Set uses eight solid state switches that have internal 50 Ohm termination. The switches select the RF paths from the PNA source and receiver through interconnect cables to the Test Set. PNA-L or PNA-X Ports 1 thru 4 and Test Set Ports paths 5 thru 8.

PNA-L Switch Paths

S100 - Source Output to Ports (1 and 5)

Switch 100 provides control of the Source Output path to PNA Port 1 and Test Set Port 5. In the state shown in the block diagram, switch 100 routes the RF Source back to the PNA Port 1, and the Test Set Source path to Port 5 is terminated.

S200 - Source to Ports (2 and 6)

Switch 200 provides control of the Source Output path to PNA Ports 2 and Test Set Port 6. In the state shown in the block diagram, switch 200 routes the RF Source back to the PNA Port 2, and the Test Set Source Output path to Port 6 is terminated.

S300 - Source to Ports (3 and 7)

Switch 300 provides control of the Source Output path to PNA Port 3 and Test Set Port 7. In the state shown in the block diagram, switch 300 routes the RF Source back to the PNA Port 3, and the Test Set Source path to Port 7 is terminated.

S400 - Source to Ports (4 and 8)

Switch 400 provides control of the Source Output path to PNA Port 4 and Test Set Port 8. In the state shown in the block diagram, switch 400 routes the RF Source back to the PNA Port 4, and the Test Set Source path to Port 8 is terminated.

S101 - Receiver to Ports (1 and 5)

Switch 101 provides control of the Receiver Input path to PNA Port 1 and Test Set Port 5. In the state shown in the block diagram, switch 101 routes the Port 1 Coupler Arm to the Receiver, and Test Set Port 5 Coupler Arm path is terminated.

S201 - Receiver to Ports (2 and 6)

Switch 201 provides control of the Receiver Input path to PNA Port 2 and Test Set Port 6. In the state shown in the block diagram, switch 201 routes the Port 2 Coupler Arm to the Receiver, and Test Set Port 6 Coupler Arm path is terminated.

S301 - Receiver to Ports (3 and 7)

Switch 301 provides control of the Receiver Input path to PNA Port 3 and Test Set Port 7. In the state shown in the block diagram, switch 301 routes the Port 3 Coupler Arm to the Receiver, and Test Set Port 7 Coupler Arm path is terminated.

S401 - Receiver to Ports (4 and 8)

Switch 401 provides control of the Receiver Input path to PNA Port 4 and Test Set Port 8. In the state shown in the block diagram, switch 401 routes the Port 4 Coupler Arm to the Receiver, and Test Set Port 8 Coupler Arm path is terminated.

PNA-X Switch Paths

S100 - Source to Ports (1 and 5)

Switch 100 provides control of the Source Output path to PNA Port 1 and Test Set Port 5. In the state shown in the block diagram, switch 100 routes the RF Source back to the PNA Port 1, and the Test Set Source path to Port 5 is terminated.

S200 - Source to Ports (3 and 6)

Switch 200 provides control of the Source Output path to PNA Port 3 and Test Set Port 6. In the state shown in the block diagram, switch 200 routes the RF Source back to the PNA Port 3, and the Test Set Source path to Port 6 is terminated.

S300 - Source to Ports (4 and 7)

Switch 300 provides control of the Source Output path to PNA Port 4 and Test Set Port 7. In the state shown in the block diagram, switch 300 routes the RF Source back to the PNA Port 4, and the Test Set Source path to Port 7 is terminated.

S400 - Source to Ports (2 and 8)

Switch 400 provides control of the Source Output path to PNA Port 2 and Test Set Port 8. In the state shown in the block diagram, switch 400 routes the RF Source back to the PNA Port 2, and the Test Set Source path to Port 8 is terminated.

S101 - Receiver to Ports (1 and 5)

Switch 101 provides control of the Receiver Input path to PNA Port 1 and Test Set Port 5. In the state shown in the block diagram, switch 101 routes the Port 1 Coupler Arm to the Receiver, and Test Set Port 5 Coupler Arm path is terminated.

S201 - Receiver to Ports (3 and 6)

Switch 201 provides control of the Receiver Input path to PNA Port 3 and Test Set Port 6. In the state shown in the block diagram, switch 201 routes the Port 3 Coupler Arm to the Receiver, and Test Set Port 6 Coupler Arm path is terminated.

S301 - Receiver to Ports (4 and 7)

Switch 301 provides control of the Receiver Input path to PNA Port 4 and Test Set Port 7. In the state shown in the block diagram, switch 301 routes the Port 4 Coupler Arm to the Receiver, and Test Set Port 7 Coupler Arm path is terminated.

S401 - Receiver to Ports (2 and 8)

Switch 401 provides control of the Receiver Input path to PNA Port 2 and Test Set Port 8. In the state shown in the block diagram, switch 401 routes the Port 2 Coupler Arm to the Receiver, and Test Set Port 8 Coupler Arm path is terminated.

System Block Diagrams

Figure 50 U3042AE04 Standard Configuration

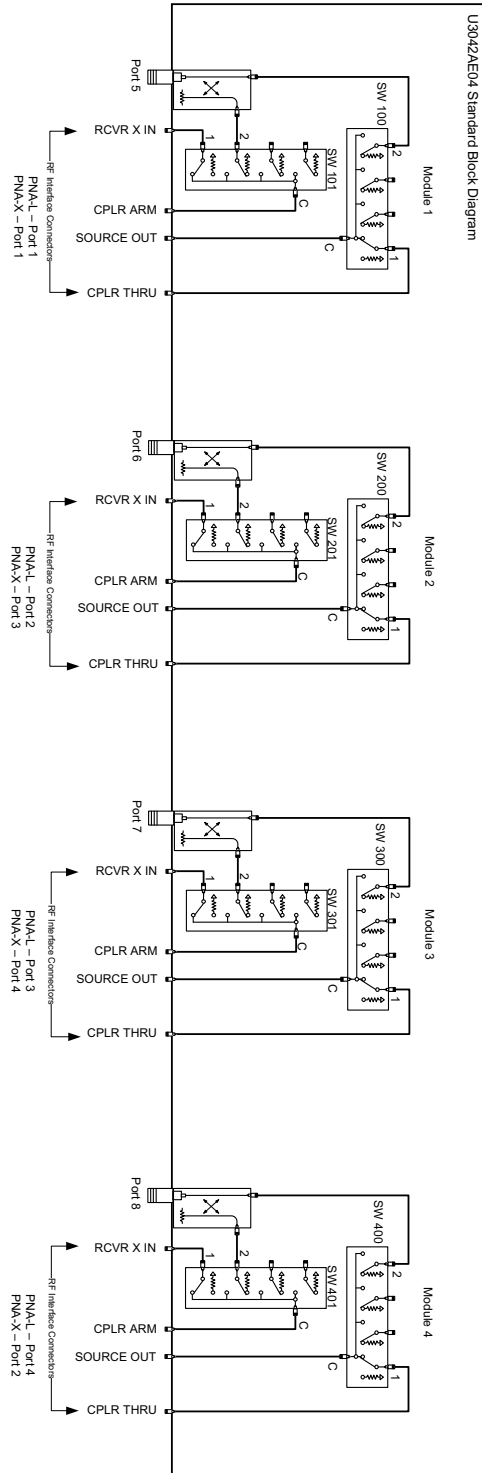


Figure 51 U3042AE04 Option 001 Configuration

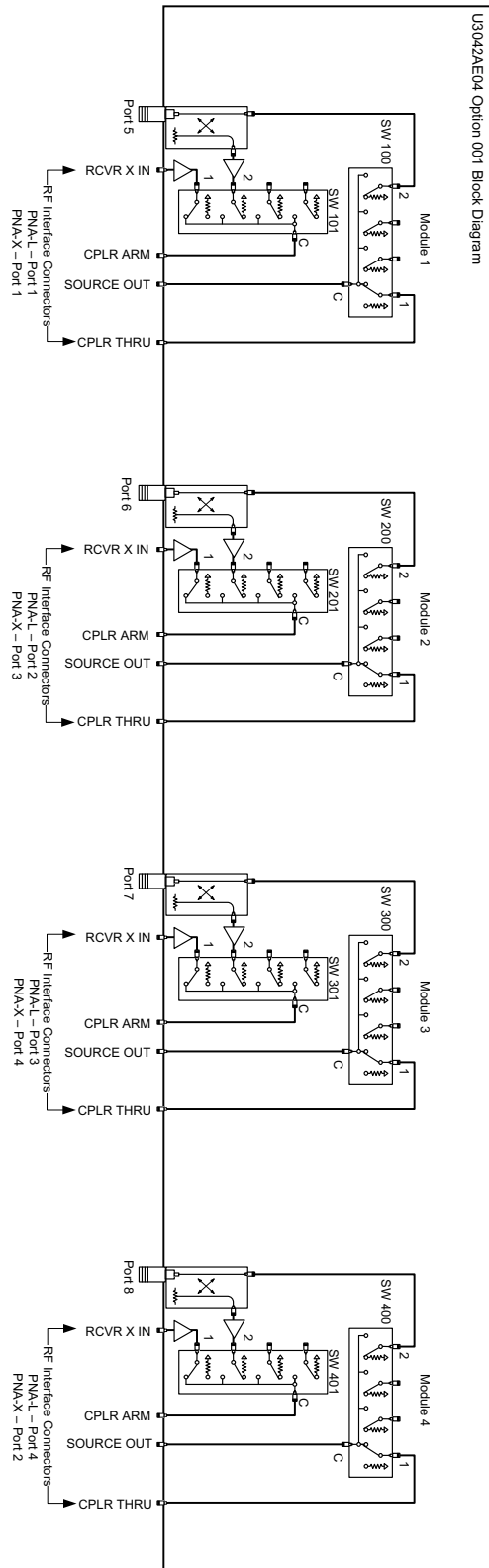
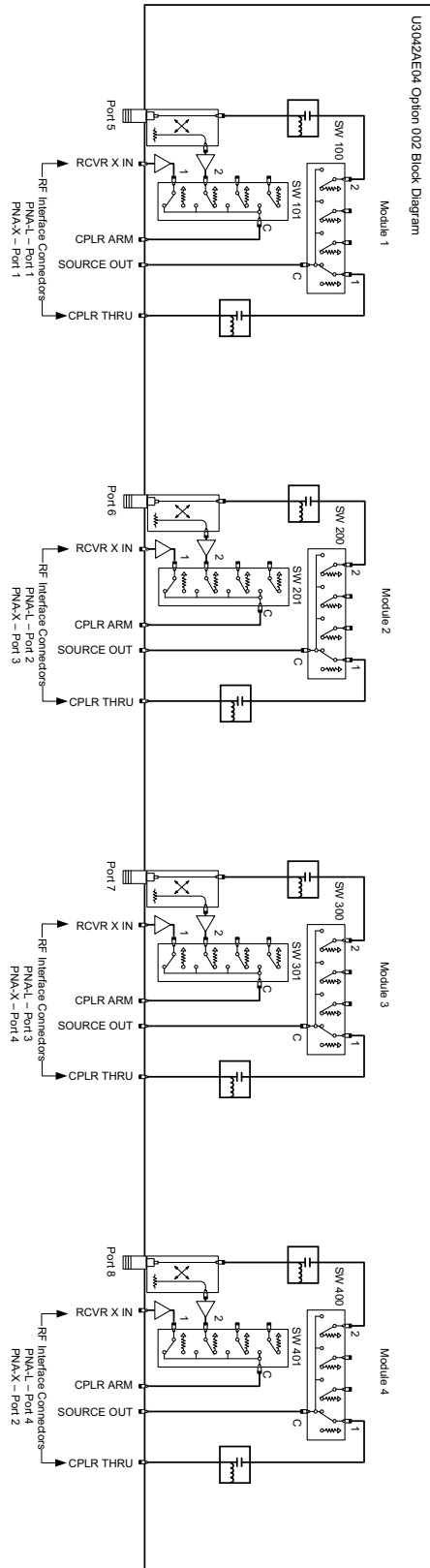


Figure 52 U3042AE04 Option 002 Configuration



Safety and Regulatory Information

Introduction

Review this product and related documentation to familiarize yourself with safety markings and instructions before you operate the instrument. The documentation contains information and warnings that must be followed by the user to ensure safe operation and to maintain the product in a safe condition.

Before Applying Power

Verify that the premises electrical supply is within the range of the instrument. The instrument has an autoranging power supply.

WARNING To prevent electrical shock, disconnect the **Agilent Technologies U3042AE04** from mains electrical supply before cleaning. Use a dry cloth or one slightly dampened with water to clean the external case parts. Do not attempt to clean internally.

Connector Care and Cleaning

If alcohol is used to clean the connectors, the power cord to the instrument must be removed. All cleaning should take place in a well ventilated area. Allow adequate time for the fumes to disperse and moist alcohol to evaporate prior to energizing the instrument.

WARNING Keep isopropyl alcohol away from heat, sparks, and flame. Store in a tightly closed container. It is extremely flammable. In case of fire, use alcohol foam, dry chemical, or carbon dioxide; water may be ineffective.

Declaration of Conformity

A copy of the Declaration of Conformity is available upon request, or a copy is available on the Agilent Technologies web site at <http://regulations.corporate.agilent.com/DoC/search.htm>

Statement of Compliance

This instrument has been designed and tested in accordance with CAN/CSA 22.2 No. 61010-1-04, UL Std No. 61010-1 (Second Edition), and IEC 61010-1 (Second Edition).

General Safety Considerations

Cautions

Cautions applicable to this instrument.

CAUTION The Mains wiring and connectors shall be compatible with the connector used in the premise electrical system. Failure, to ensure adequate earth grounding by not using the correct components may cause product damage, and serious injury.

CAUTION Always use the three prong AC power cord supplied with this product. Failure to ensure adequate earth grounding by not using this cord may cause product damage and the risk of electrical shock.

CAUTION This product is designed for use in Installation Category II and Pollution Degree 2.

CAUTION Verify that the premise electrical voltage supply is within the range specified on the instrument.

CAUTION Ventilation Requirements: When installing the instrument in a cabinet, the convection into and out of the instrument must not be restricted. The ambient temperature (outside the cabinet) must be less than the maximum operating temperature of the instrument by 4 °C for every 100 watts dissipated in the cabinet. If the total power dissipated in the cabinet is greater than 800 watts, forced convection must be used.

Servicing

Warnings applicable to this instrument.

WARNING **Danger of explosion if battery is incorrectly replaced. Replace only with the same or equivalent type recommended. Discard used batteries according to manufacturer's instructions.**

WARNING **This is a Safety Class I product (provided with a protective earthing ground incorporated in the power cord). The mains plug shall be inserted only into a socket outlet provided with a protective earth contact. Any interruption of the protective conductor, inside or outside the product is likely to make the product dangerous. Intentional interruption is prohibited.**

WARNING **These servicing instructions are for use by qualified personnel only. To avoid electrical shock, do not perform any servicing unless you are qualified to do so.**

WARNING **The opening of covers or removal of parts is likely to expose the user to dangerous voltages. Disconnect the instrument from all voltage sources before being opened.**

WARNING **This product is designed for use in Installation Category II and Pollution Degree 2.**

WARNING **No operator serviceable parts inside. Refer servicing to qualified personnel.**

WARNING **If this product is not used as specified, the protection provided by the equipment could be impaired. This product must be used in a normal condition (in which all means for protection are intact) only.**

Regulatory Information

This section contains information that is required by various government regulatory agencies.

Instrument Markings



The instruction documentation symbol. The product is marked with this symbol when it is necessary for the user to refer to the instructions in the documentation.



This symbol indicates that the instrument requires alternating current (ac) input.



This symbol indicates separate collection for electrical and electronic equipment, mandated under EU law as of August 13, 2005. All electric and electronic equipment are required to be separated from normal waste for disposal (Reference WEEE Directive, 2002/96/EC).



This symbol indicates that the power line switch is ON.



This symbol indicates that the power line switch is in the STANDBY position.



This symbol indicates that the power line switch is in the OFF position.



This symbol is used to identify a terminal which is internally connected to the product frame or chassis.



The CE mark is a registered trademark of the European Community. (If accompanied by a year, it is when the design was proven.)



The CSA mark is a registered trademark of the CSA International. This instrument complies with Canada: CSA 22.2 No. 61010-1-04.

ISM1-A

This is a symbol of an Industrial Scientific and Medical Group 1 Class A product.

ICES/NMB-001

This is a marking to indicate product compliance with the Canadian Interference-Causing Equipment Standard (ICES-001).



Direct Current.

IP 2 0

The instrument has been designed to meet the requirements of IP 2 0 for ingress and operational environment.



This is a required mark signifying compliance with an EMC requirement. The C-Tick mark is a registered trademark of the Australian Spectrum Management Agency.



China RoHS regulations include requirements related to packaging, and require compliance to China standard GB18455-2001.



This symbol indicates compliance with the China RoHS regulations for paper/fiberboard packaging.

Battery Collection

Do not throw batteries away but collect as small chemical waste, or in accordance with your country's requirements. You may return the battery to Agilent Technologies for disposal. Refer to [“Contacting Agilent” on page 68](#) for assistance.

Compliance with German Noise Requirements

This is to declare that this instrument is in conformance with the German Regulation on Noise Declaration for Machines (Laermangabe nach der Maschinenlaermrerordnung-3. GSGV Deutschland).

Acoustic Noise Emission/Geraeuschemission	
LpA<70 dB	Lpa<70 dB
Operator Position	am Arbeitsplatz
Normal Operation	normaler Betrieb
per ISO 7779	nach DIN 45635 t. 19

EMC Information

Complies with European EMC Directive 2004/108/EC

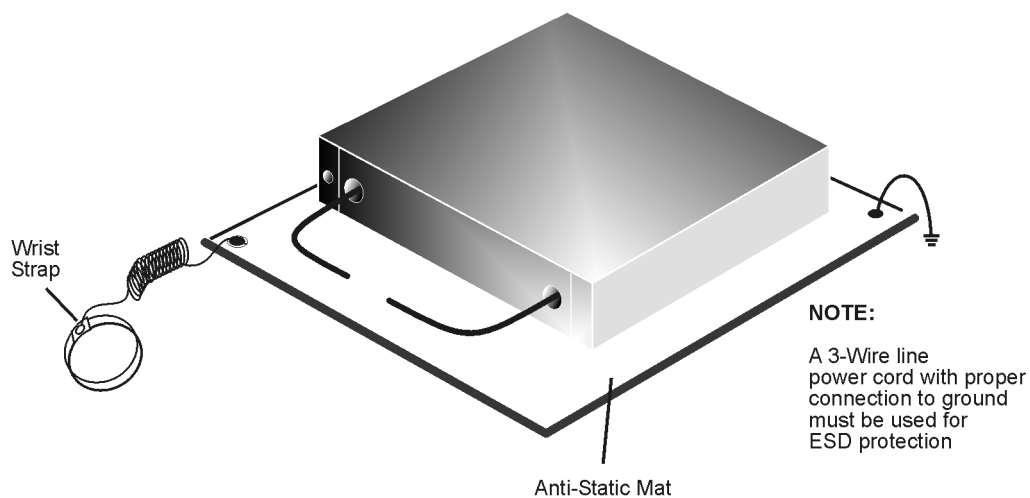
- IEC/EN 61326-1
- CISPR Pub 11 Group 1, class A
- AS/NZS CISPR 11
- This ISM device complies with Canadian ICES-001.
Cet appareil ISM est conforme a la norme NMB du Canada.

Electrostatic Discharge Protection

Protection against electrostatic discharge (ESD) is essential while removing assemblies from or connecting cables to the analyzer. Static electricity can build up on your body and can easily damage sensitive internal circuit elements when discharged. Static discharges too small to be felt can cause permanent damage. To prevent damage to the instrument:

- *always* have a grounded, conductive table mat (9300-0797) in front of your test equipment.
- *always* wear a grounded wrist strap (9300-1367) with grounding cord (9300-0980), connected to a grounded conductive table mat, having a 1 M Ω resistor in series with it, when handling components and assemblies or when making connections.
- *always* wear a heel strap (9300-1126) when working in an area with a conductive floor. If you are uncertain about the conductivity of your floor, wear a heel strap.
- *always* ground yourself before you clean, inspect, or make a connection to a static-sensitive device or test port. You can, for example, grasp the grounded outer shell of the test port or cable connector briefly.
- *always* ground the center conductor of a test cable before making a connection to the analyzer test port or other static-sensitive device. This can be done as follows:
 1. Connect a short (from your calibration kit) to one end of the cable to short the center conductor to the outer conductor.
 2. While wearing a grounded wrist strap, grasp the outer shell of the cable connector.
 3. Connect the other end of the cable to the test port and remove the short from the cable.

Figure 17 ESD Protection Setup



ku310b

Agilent Support, Services, and Assistance

Service and Support Options

The Test Set's standard warranty is a one-year return to Agilent Technologies service warranty.

A periodic calibration is not required. The Operators Check should be performed after System Setup, or if performance is in question. An N-Port calibration should be performed before making a measurement.

NOTE There are many other repair and calibration options available from the Agilent Technologies support organization. These options cover a range of service agreements with varying response times. Contact Agilent for additional information on available service agreements for this product.

Contacting Agilent

Assistance with test and measurements needs and information or finding a local Agilent office are available on the Web at:

<http://www.agilent.com/find/assist>

You can also purchase accessories or documentation items on the Internet at:

<http://www.agilent.com/find>

If you do not have access to the Internet, contact your field engineer.

In any correspondence or telephone conversation, refer to the Agilent product by its model number and full serial number. With this information, the Agilent representative can determine the warranty status of your unit.

Shipping Your Analyzer to Agilent for Service or Repair

IMPORTANT Agilent Technologies reserves the right to reformat or replace the internal hard disk drive in your analyzer as part of its repair. This will erase all user information stored on the hard disk. It is imperative, therefore, that you make a backup copy of your critical test data located on the analyzer's hard disk before shipping it to Agilent for repair.

If you wish to send your instrument to Agilent Technologies for service or repair:

- Include a complete description of the service requested or of the failure and a description of any failed test and any error message.
- Ship the analyzer using the original or comparable antistatic packaging materials.
- Contact Agilent for instructions on where to ship your analyzer.